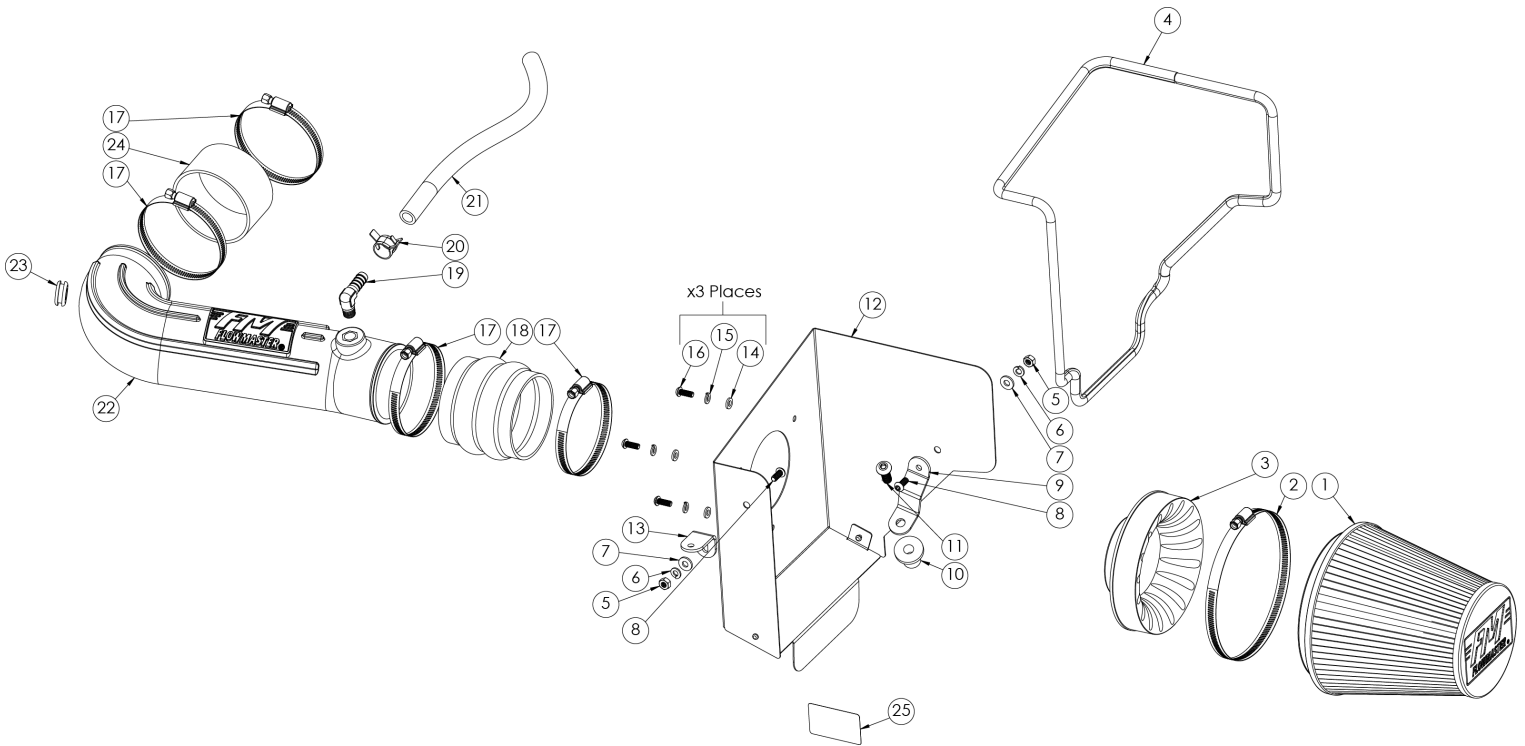




# Installation Instructions 615105

This system will NOT fit vehicles equipped with Hydrocarbon Trap (HCT) device. Review VECI label located in engine bay; vehicles listing EVAP family LCRXR0168PP0 contain a HCT device.

SEE CARB APPROVED SPECIFIC APPLICATION IN OVERVIEW SECTION ON PAGE 2.



ITEM NO.	PART NUMBER	DESCRIPTION	QTY.
1		FILTER, AIR 6.5" HIGH, 6" DIA FLANGE	1
2	AF1002	#104 HOSE CLAMP 4.125 DIA TO 7"	1
3	AF6001	3.5" AIR FILTER ADAPTER	1
4	49000061	PUSH ON VINYL AIR BOX TRIM SEAL	1
5	HW115	1/4"-20 NUT SS	2
6	HW322	1/4" SPLIT LOCK WASHER SS	2
7	HW320	1/4" FLAT WASHER SAE SS	2
8	HW245	1/4"-20 X 5/8" BTNHD SS	2
9	AF5008	11Ga. X 1" BRACKET 2, 615105	1
10	HW119	NUT, BRASS RIVET 3/4" OD RUBBER INSULATED	1
11	HW250	3/8"-16 X 1.125" BTNHD SS	1
12	AF3003	INTAKE AIRBOX	1

ITEM NO.	PART NUMBER	DESCRIPTION	QTY.
13	AF5007	11Ga. X 1" BRACKET 1, 615105	1
14	HW319	M6 FLAT WASHER SS	3
15	HW318	M6 SPLIT LOCK WASHER SS	3
16	HW244	M6 X 1.0 X 16MM BTNHD SS	3
17	MC350H	#56 HOSE CLAMP 3 1/16 DIA TO 4"	4
18	AF4015	3.5"ID X 3.50"L RUBBER COUPLER, DOUBLE HUMP	1
19	AF4012	1/2" BARB TO 1/4" NPT MALE 90DEG	1
20	MC003P	1/2" HOSE PINCH CLAMP	1
21	49000064	.50" I.D. FUEL HOSE	1
22	AF2003	INTAKE TUBE	1
23	AF4008	GROMMET, RUBBER 1.06"OD X 1/2"ID X 7/16"THK	1
24	AF4007	3.5" X 2"L RUBBER COUPLER, STRAIGHT	1
25	LB698-17	CARB EO Label (D-698-17)	1

## OVERVIEW:

1

2006-20 DODGE CHARGER, 2008-20 CHALLENGER, 2005-19 CHRYSLER 300 & 2005-09 DODGE MAGNUM 5.7L ENGINE

2006-10 DODGE CHARGER, 2008-10 DODGE CHALLENGER, 2005-10 CHRYSLER 300 & 2005-08 DODGE MAGNUM 6.1L ENGINE

This product has been granted CARB EO D-698-15 for the above applications.


7

2005-21 DODGE CHALLENGER R/T, CHARGER R/T, MAGNUM R/T, CHRYSLER 300C, 5.7L HEMI ENGINES

2006-21 SRT8, 6.1L HEMI ENGINES

The above applications are legal under the provisions of EPA's Tampering Policy dated November 23rd, 2020. The company has reasonable basis (test results) to verify that this product allows the vehicle to operate within legal emissions standards and is therefore legal to be sold for on-street use in all states that accept the legal provisions of the Clean Air Act and the EPA Tampering Policy. This product is NOT LEGAL FOR SALE OR USE IN THE STATE OF CALIFORNIA. Testing with the California Air Resources Board, in order to achieve 50-state compliance, is pending with CARB. Once testing is complete with California, and an E.O. number is issued, this product will be updated to 50-state legal status.



3. Loosen the hose clamp  which secures the factory intake tube to the throttle body. Pull the tube away from throttle body and let it hang in place.



1. Carefully remove air temp. sensor connection.



4. Remove the bolt for the factory air-box on the radiator core support and retain for later use. Remove the entire factory air-box/intake tube assembly by lifting straight up and out. NOTE: We highly recommend that customers retain their factory air intake system.



2. Disconnect crank case vent hose from stock air-box.

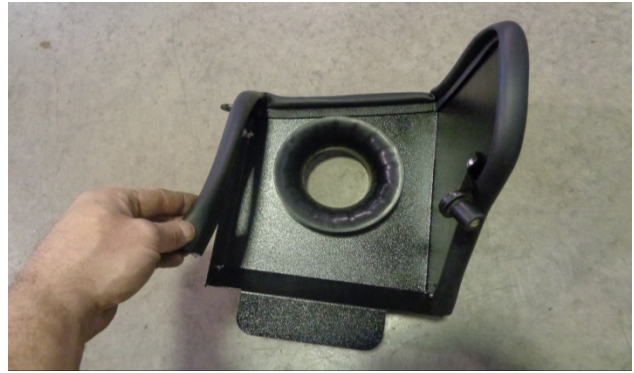


5. Remove the air temperature sensor from the factory intake tube by prying the locking tab outward with a flat screwdriver and rotating counter-clockwise as shown.



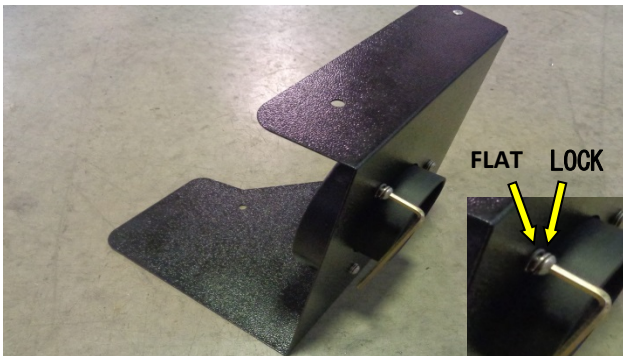


6. Remove the o-ring from the stock air temperature sensor and lubricate the o-ring area with a small amount of sensor-safe silicone grease or equivalent lubricant. Retain sensor for reinstallation later.



9. Install the rubber trim seal along the outer top and side edges as shown. Press fully into the groove starting from one end. Trim the final length with metal shears for proper fitment.

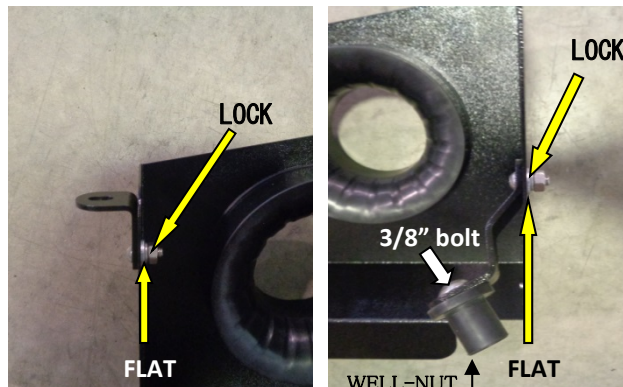
**Assembly:** Assemble the FM Cold Air Intake using the drawing on the front page for reference.



7. Begin by installing the filter adapter onto the heat shield as shown. Fasten with three 6mm screws with flat and locking washers in the sequence shown. Tighten securely but avoid over-torque.



10. Install the heat shield assembly (minus the intake tube and air filter) into the vehicle as shown above with the well-nut expanded tight into the hole on the fender. Reinstall front cross frame bolt and tighten.



8. Loosely attach the two provided metal brackets to the heat shield using the 1/4" cap screws and corresponding flat and lock washers → and the well-nut with corresponding 3/8" bolt ⇨ as shown.



11. Loosely assemble the provided silicone-rubber couplers and corresponding hose clamps onto the FM intake tube as shown.



12. Carefully thread the included 90 degree barbed fitting into the brass threaded insert on the intake tube. **Do not exceed 8 ft/lbs torque; if necessary, apply Teflon thread tape to achieve proper clocking and torque.**



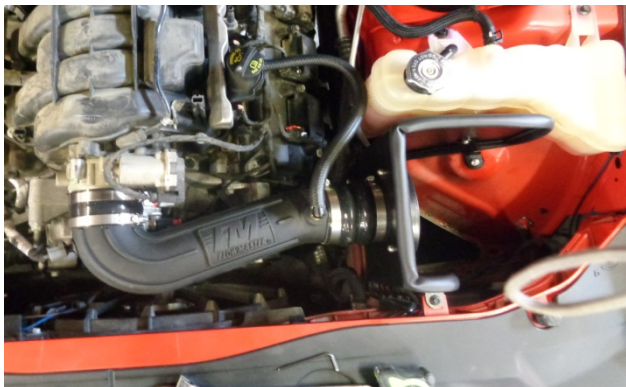
15. \*On some models, the wiring harness may need to be relaxed in order to reach the air temperature sensor. This is accomplished by gently prying the plastic dart-clamp → out of its hole.



13. Install the included rubber grommet into the hole on the FM intake tube elbow and insert the air temperature sensor to the fully-seated position as shown by twisting clockwise and pressing inward .



16. Secure the provided cone filter using the included hose clamp in the desired position. Recheck torque on all fasteners and clamps, reinstall the engine cover and reattach the negative battery cable.



14. Install the FM intake tube assembly onto the air-box and the throttle body. Align and tighten all hose clamps for a satisfactory fit. Attach crankcase vent hose, pinch clamp, and air temperature sensor plug \* (see below).

**FLOWMASTER** CARB EO #  
THE PERFORMANCE TECHNOLOGY COMPANY

**DELTA FORCE PERFORMANCE INTAKE**

**D-698-17**

**FLOWMASTER INC. • 866-464-6553**  
 1801 RUSSELLVILLE ROAD, BOWLING GREEN, KY 42101

17. Affix the CARB EO label (25) to a clean, readily-visible location under the hood (e.g., near the hood latch).

**Congratulations, the installation of your FLOWMASTER cold air intake kit is now complete!**