



Installation Instructions

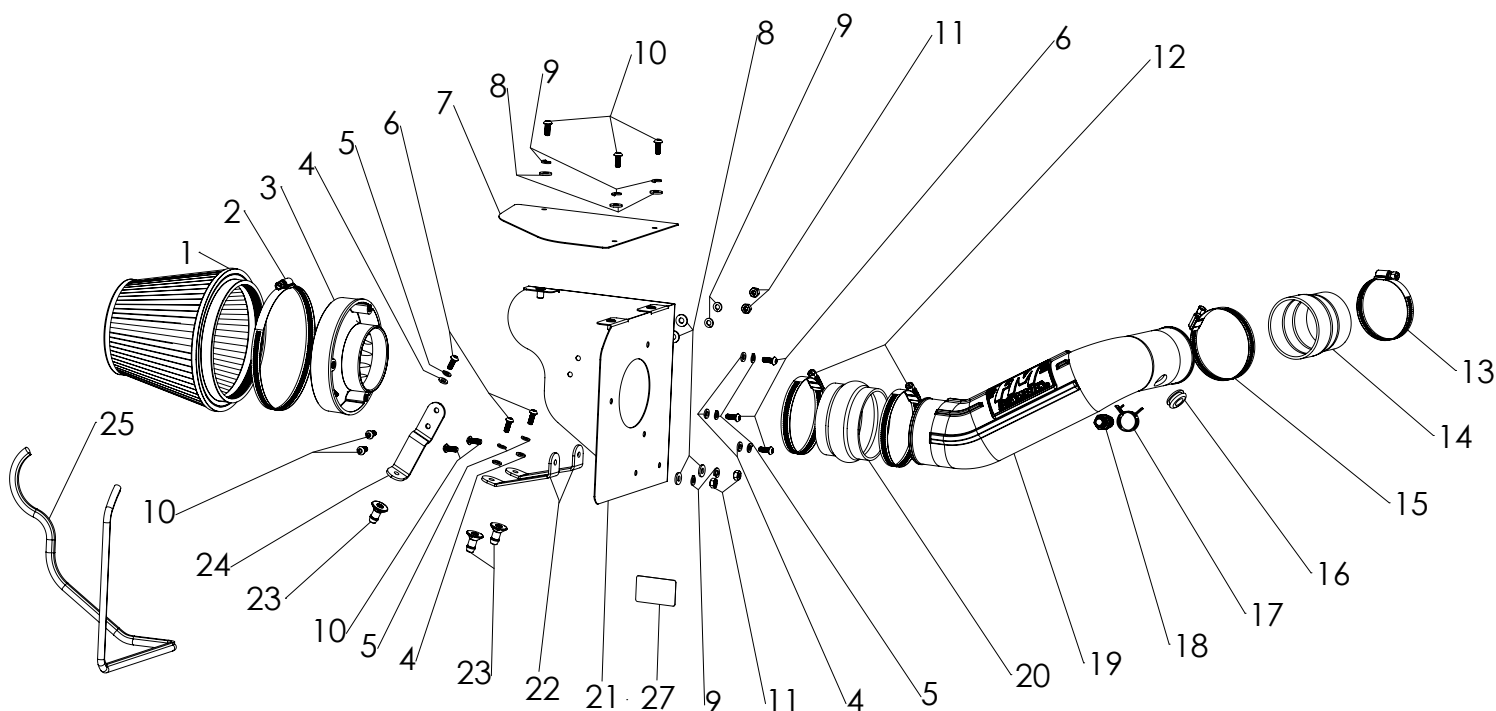
615142D

2007-11 JEEP WRANGLER

3.8L ENGINE

This kit is not designed to fit vehicles with a body lift.

THIS INTAKE SYSTEM IS 50-STATE LEGAL FOR THE VEHICLES LISTED ABOVE PER CARB EXECUTIVE ORDER D-698-10. SEE WWW.FLOWMASTERMUFFLERS.COM FOR CARB STATUS OF INTAKE SYSTEMS FOR OTHER VEHICLES.



| ITEM NO. | PART NUMBER | DESCRIPTION | QTY. |
|----------|-------------|---|------|
| 1 | AF1007 | AIR FILTER, DRY, 6-5/8" x 6" DIA | 1 |
| 2 | | SCREW CLAMP, #104 (4-1/8" - 7") | 1 |
| 3 | AF6001 | ADAPTER, AIR FILTER 3-1/2" x 6" | 1 |
| 4 | HW319 | FLAT WASHER, M6 | 6 |
| 5 | HW318 | LOCK WASHER, M6 | 6 |
| 6 | HW244 | SCREW, M6 x 1.0 x 16MM | 6 |
| 7 | AF3013 | LID, AIRBOX | 1 |
| 8 | HW320 | FLAT WASHER, 1/4" | 7 |
| 9 | HW322 | LOCK WASHER, 1/4" | 7 |
| 10 | HW245 | SCREW, 1/4"-20 x 5/8" | 7 |
| 11 | HW115 | NUT, 1/4"-20 | 4 |
| 12 | MC350H | SCREW CLAMP, #56 (3-1/16" - 4") | 2 |
| 13 | MC250H | SCREW CLAMP, #44 (2-1/4" - 3-1/4") | 1 |
| 14 | AF4031 | COUPLER, REDUCING 3" - 2-3/4" I.D. x 3" L | 1 |

| ITEM NO. | PART NUMBER | DESCRIPTION | QTY. |
|----------|-------------|--|------|
| 15 | MC314H | SCREW CLAMP, #52 (2-13/16" - 3-3/4") | 1 |
| 16 | AF4008 | GROMMET, 1-1/16" OD x 1/2" ID x 7/16" THK | 1 |
| 17 | MC004P | PINCH CLAMP, 5/8" HOSE | 1 |
| 18 | AF4032 | FITTING, STRAIGHT 5/8" BARB TO 1/4" NPT MALE | 1 |
| 19 | AF2013 | INTAKE TUBE | 1 |
| 20 | AF4019 | 3.50" ID X 2.50" L RUBBER COUPLER, HUMP | 1 |
| 21 | AF3007 | HEAT SHIELD | 1 |
| 22 | AF5015 | 11GA X 1" BRACKET #2 | 2 |
| 23 | AF7001 | BARBED PIN, M6 x 1.0 | 3 |
| 24 | AF5014 | 11GA X 1" BRACKET #1 | 1 |
| 25 | 49000061 | GASKET, HEAT SHIELD | 1 |
| 26 | 615002P | PRE FILTER WRAP (NOT SHOWN) | 1 |
| 27 | D-698-10 | EXECUTIVE ORDER DECAL | 1 |

REVIEW THE INSTRUCTIONS AND VERIFY KIT CONTENTS:

1. Please take a moment to read and understand these instructions before installing your Flowmaster performance air intake kit.



2. Use the parts drawing and list (front page) to verify your kit's contents.

In the unlikely event that any parts are missing, please contact FLOWMASTER Technical Support for replacements.

To simplify assembly and avoid cross-threading fasteners, identify and separate the 1/4-20 screws, item (10) (used with nuts (11) and airbox (21)), and the M6 screws, item (6) (used with barbed pins (23) and filter adapter (3)).

REMOVE FACTORY AIR INTAKE SYSTEM:

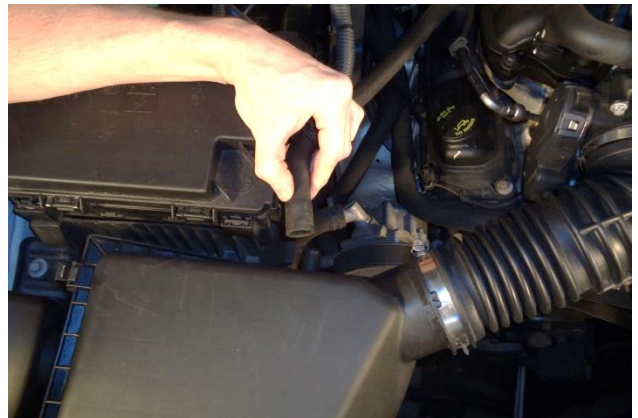
NOTES

- We highly recommend that you retain all factory air intake system parts.
- Please refer to vehicle manufacturer's recommendations regarding removal of factory components.
- Disconnecting the negative battery cable erases pre-programmed electronic memories. Write down all memory settings before disconnecting the negative battery cable. Some radios will require an anti-theft code to be entered after the battery is reconnected. The anti-theft code is typically supplied with your owner's manual. In the event your vehicle's anti-theft code cannot be recovered, contact an authorized dealership to obtain your vehicle's anti-theft code.

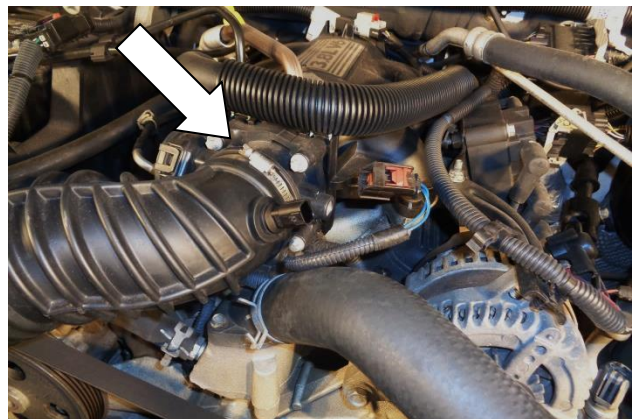
3. Turn off the vehicle's ignition and disconnect the negative battery cable.



4. Carefully remove intake air temperature sensor electrical connector by pulling the locking tab out until it stops, then depressing the latch and pulling the connector straight off the sensor.



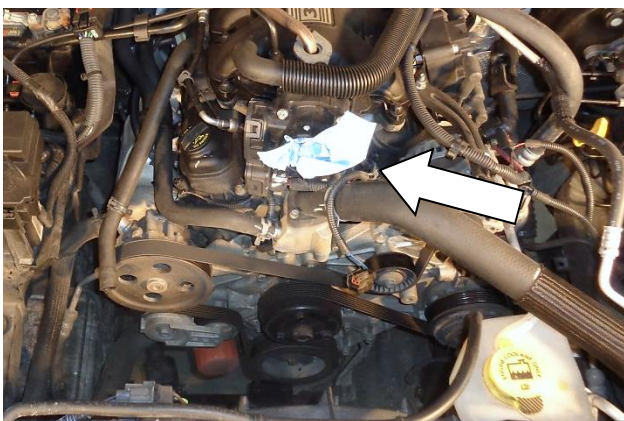
5. Disconnect PCV hose from airbox.



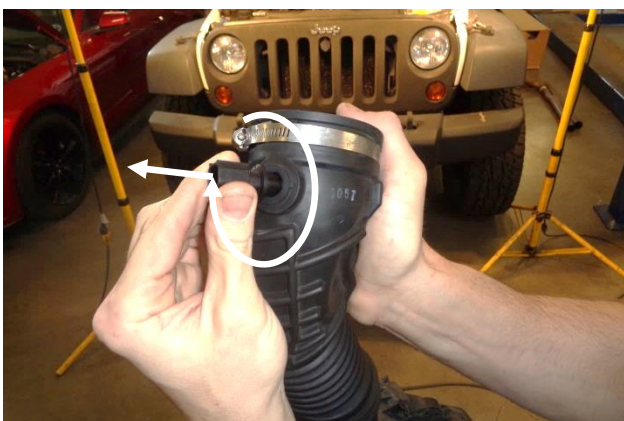
6. Loosen hose clamp securing the air intake duct to the throttle body.



7. The airbox is retained by three barbed pins. Pull the intake duct free of the throttle body, then grasp the airbox and lift the assembled airbox and duct straight up.



8. Protect the throttle body opening from foreign objects by **temporarily** inserting a clean rag or paper towel in the opening, or securing a plastic bag over the opening with a rubber band. (**To be removed at Step 19.**)



9. The intake air temperature sensor is held in the intake duct by friction. Firmly grasp it and, while pulling it away from the duct, carefully wiggle it around in the duct. **CAUTION: The sensor is delicate!** Handle with care, and store in a safe location until reinstallation.

ASSEMBLE AND INSTALL YOUR FLOWMASTER COLD AIR INTAKE SYSTEM:



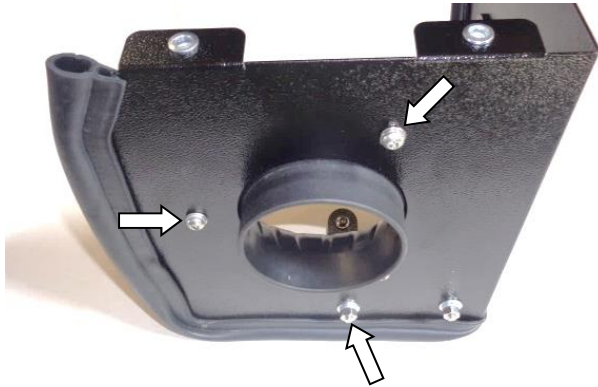
10. Attach 1 bracket (24) and 2 brackets (22) to airbox (21) using ¼-20 screws (10) (on the bracket side), and flat washers (8), lock washers (9) and nuts (11) (on the airbox side).



11. Attach the rubber trim seal (25) to the airbox. Starting at either corner, firmly press the seal onto the edge, gradually working around the airbox. At the other corner, trim the seal to fit using metal-cutting shears.



12. Attach barbed pins (23) to brackets using M6 screws (6), lock washers (5), and flat washers (4).



13. Assemble air filter adapter (3) to airbox using M6 screws (6), lock washers (5) and flat washers (4).



14. Set assembled airbox in vehicle, aligning the 3 barbed pins with their rubber grommets in the vehicle. Adjust alignment of brackets (22) if required. Push each pin into its grommet, one at a time. **NOTE:** Moistening the grommets with soapy water will ease insertion.



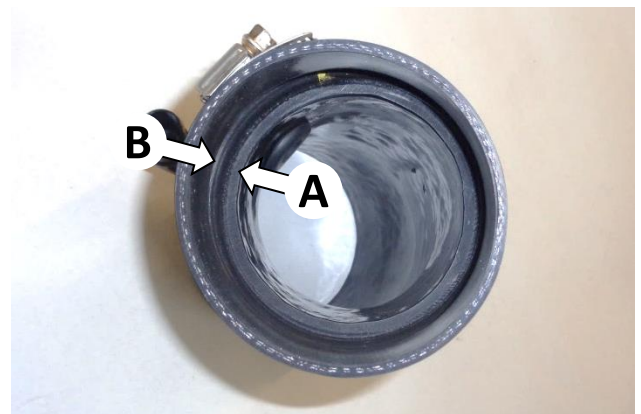
15. Apply 2 wraps of nylon thread tape to threads of barbed PCV fitting (18), and install fitting in intake tube (19). Install rubber grommet (16) in intake tube.



16. Carefully insert the intake air temperature sensor into the grommet, ensuring that the notch in its base points downstream. **NOTE:** Moistening the grommet with soapy water will ease insertion.



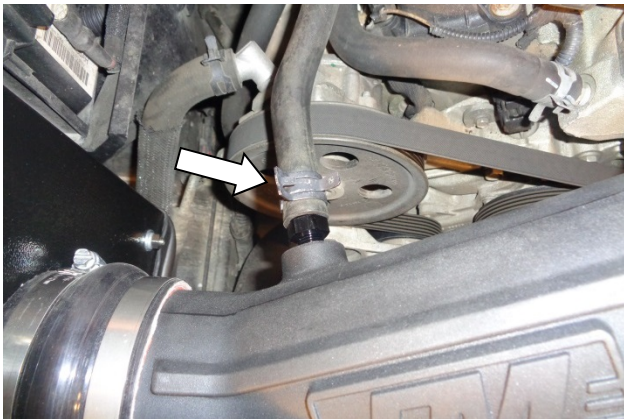
17. Install 2 hose clamps (12) on flex coupler (20), and install coupler on intake end of intake tube. Install hose clamps (15) and (13) on tapered coupler (14), and install coupler on discharge end of tube. Orient clamp screws so as to allow tightening after installation on vehicle.



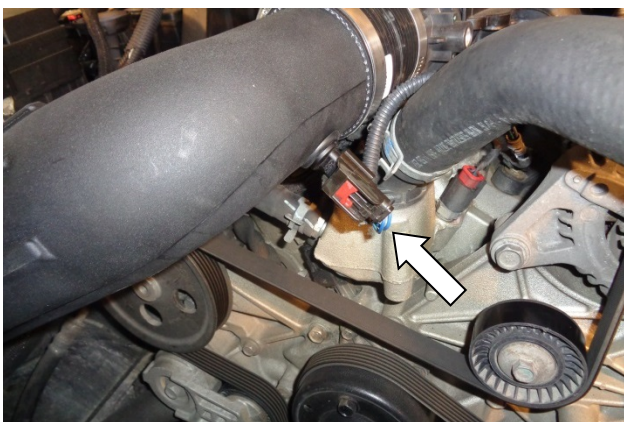
18. To allow proper flexing of the flex coupler during engine torqueing, verify that the end of the intake tube (A) sits even with, or slightly behind, the coupler's transition lip (B).



19. Remove the rag or plastic bag (temporarily installed at Step 8) from the throttle body opening. Install assembled intake tube in vehicle and tighten all hose clamps.



20. Secure PCV hose on barbed fitting with pinch clamp (17).



21. Reinstall the intake air temperature sensor connector and verify the connector is secure.



22. Install clamp (2) on air filter (1), install filter on filter adapter and tighten clamp. If desired, install pre-filter (26) over the cone element. This will help extend the life of the filter by keeping out the larger particles.



23. Install airbox cover (7) on airbox, using ¼-20 screws (10), lock washers (9), and flat washers (8).

FLOWMASTER CARB EO #

THE PERFORMANCE TECHNOLOGY COMPANY™

DELTA FORCE PERFORMANCE INTAKE

D-698-10

FLOWMASTER INC. • 866-464-6553
1801 RUSSELLVILLE ROAD, BOWLING GREEN, KY 42101

24. Affix the CARB Exemption Order label to a clean, readily-visible location under the hood (e.g., near the hood latch), so an inspector can easily see it at emissions testing.



Congratulations, the installation of your FLOWMASTER cold air intake kit is now complete!



CLEANING YOUR FLOWMASTER DRY SYNTHETIC AIR FILTER and PRE-FILTER WRAP

DRY SYNTHETIC AIR FILTERS

NEVER WASH YOUR DRY AIR FILTER! However, if you drive in dusty conditions, periodically blowing the filter off with low-pressure (20-30 PSI) compressed air can extend its service life.

Inspect your filter about every 6,000 miles (or, every other oil change). When you see a buildup of dust between the pleats:



1. **Tap the filter** several times on a hard, flat surface. Tap it firmly enough to dislodge any loose particles from the pleats, but not so hard as to damage it.



2. **Blow off the outside** of the filter. Blow across the filter surface (at about a 45° angle), not through the filter material. Hold the air nozzle about 6 inches away from the filter surface, always keep it moving, and point the air jet in to—not across—the pleats.



3. **Blow through** the filter, from the inside out. Keep the nozzle moving; do not hold it stationary over one place on the filter.

Replace your filter every 15-30,000 miles—more often under dusty conditions, less often under normal highway conditions.

PRE-FILTER WRAP

If the pre-filter wrap is used, wash it as needed with warm water and dish soap, rinse with clear water, and pat dry with a towel.