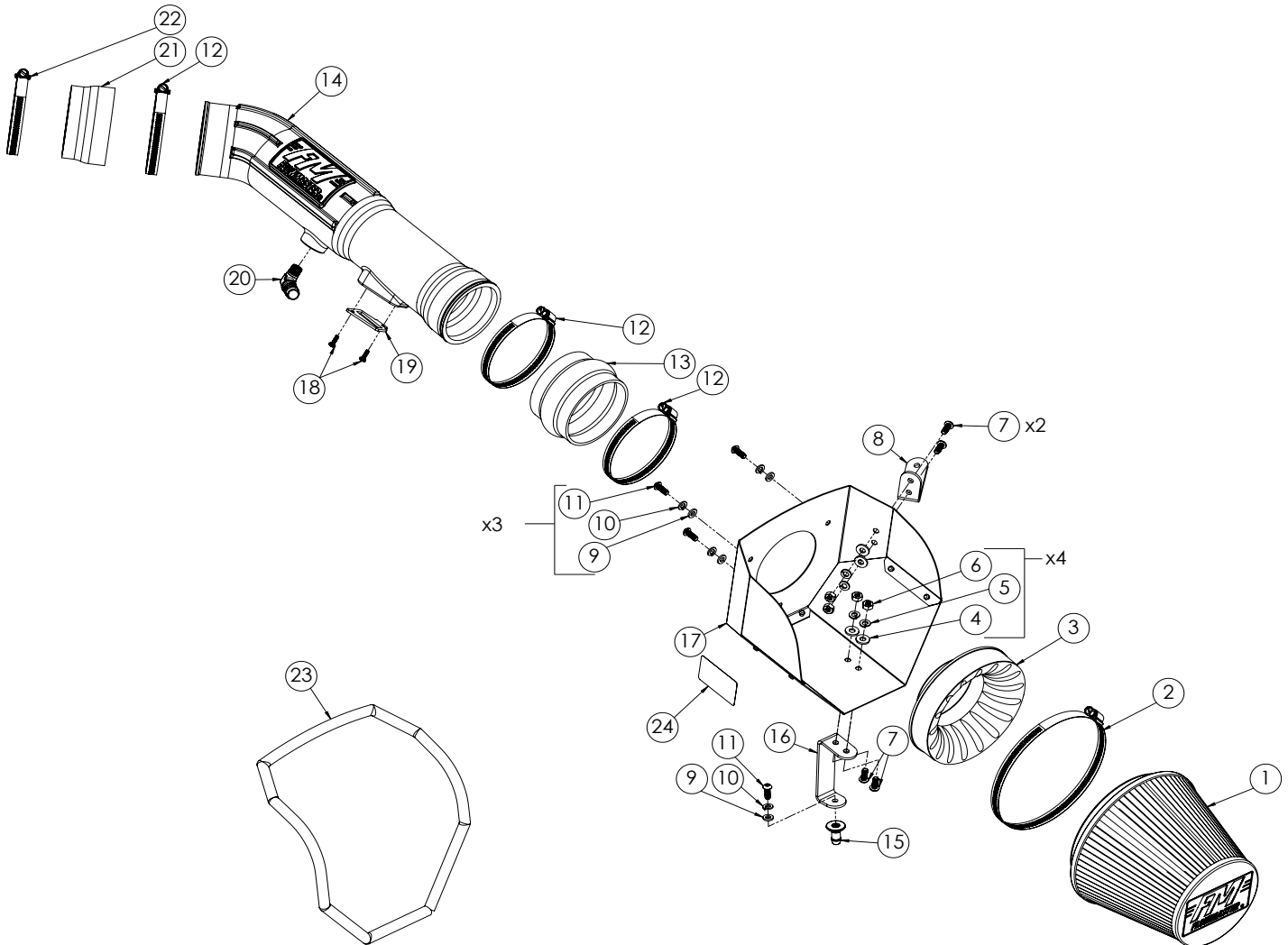




Installation Instructions 615161

2003-06 NISSAN 350Z 3.5L ENGINE

THIS INTAKE SYSTEM IS 50-STATE LEGAL FOR THE VEHICLES LISTED ABOVE PER CARB EXECUTIVE ORDER D-698-11. SEE WWW.FLOWMASTERMUFFLERS.COM FOR CARB STATUS OF INTAKE SYSTEMS FOR OTHER VEHICLES.



ITEM NO.	PART NUMBER	DESCRIPTION	QTY.
1	AF1003	AIR FILTER, 6-5/8" x 6" DIA	1
2		SCREW CLAMP, #104 (4-1/8" - 7")	1
3	AF6001	ADAPTER, AIR FILTER 3-1/2" x 6"	1
4	HW320	FLAT WASHER, 1/4"	4
5	HW322	LOCK WASHER, 1/4"	4
6	HW115	NUT, 1/4"-20	4
7	HW245	SCREW, 1/4"-20 x 5/8"	4
8	AF5069	BRACKET 2	1
9	HW319	FLAT WASHER, M6	4
10	HW318	LOCK WASHER, M6	4
11	HW244	SCREW, M6 x 1.0 x 16MM	4
12	MC350H	SCREW CLAMP, #56 (3-1/16" - 4")	3

ITEM NO.	PART NUMBER	DESCRIPTION	QTY.
13	AF4019	COUPLER, FLEX 3-1/2" I.D. x 2-1/2" L	1
14	AF2055	INTAKE TUBE	1
15	AF7001	BARBED PIN, M6 x 1.0	1
16	AF5068	BRACKET 1	1
17	AF3055	HEAT SHIELD	1
18	HW248	SCREW, M4 x 0.7 x 12MM	2
19	GA139	GASKET, MAF SENSOR	1
20	AF4038	ELBOW, 90°, 5/8" BARB TO 1/4" NPT MALE	1
21	AF4048	COUPLER, STRAIGHT 3-1/2" I.D. - 3-1/4" I.D. x 2" L	1
22	MC314H	SCREW CLAMP, #52 (2-13/16" - 3-3/4")	1
23	49000061	GASKET, HEAT SHIELD	42"
24	LB698-11	D-698-7 CARB EO LABEL	1

REVIEW THE INSTRUCTIONS AND VERIFY THE KIT CONTENTS:

1. Please take a moment to read and understand these instructions before installing your Flowmaster performance air intake kit.



2. Use the parts drawing and list (front page) to verify your kit's contents.

In the unlikely event that any parts are missing, please contact Flowmaster Technical Support for replacements.

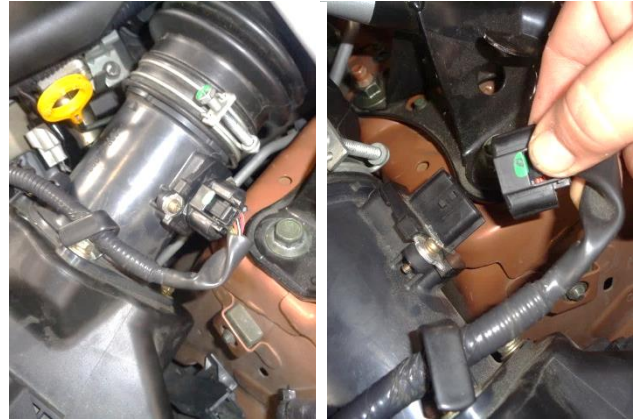
To simplify assembly and avoid cross-threading fasteners, identify and separate the ¼-20 screws (item 7) (used with nuts (6)), and the M6 screws (11) (used with filter adapter (3) and barbed pin (15)).

REMOVE THE FACTORY AIR INTAKE SYSTEM:

NOTES

- We highly recommend that you retain all factory air intake system parts.
- Please refer to vehicle manufacturer's recommendations regarding removal of factory components.
- Disconnecting the negative battery cable erases pre-programmed electronic memories. Write down all memory settings before disconnecting the negative battery cable. Some radios will require an anti-theft code to be entered after the battery is reconnected. The anti-theft code is typically supplied with your owner's manual. In the event your vehicle's anti-theft code cannot be recovered, contact an authorized dealership to obtain your vehicle's anti-theft code.

3. Turn off the vehicle's ignition and disconnect the negative battery cable. **Failure to disconnect the battery may cause the CHECK ENGINE light to illuminate after the air intake kit is installed.**



4. Disconnect the mass airflow (MAF) sensor plug by depressing the latch and pulling the plug straight off the sensor.



5. Unbend the flexible clamp to release the MAF sensor lead.



6. Carefully pry the sensor lead clamp free of the airbox.



7. Remove the air duct bracket bolt.



10. Separate the duct from the throttle body and the airbox, then carefully roll the duct slightly away from the engine.



8. Loosen the screw clamp that secures the duct to the airbox.



11. Loosen the pinch clamp, separate the PCV line from the intake duct and remove the duct from the vehicle. Retain the pinch clamp for use at **Step 27**.



9. Loosen the screw clamp that secures the duct to the throttle body.



12. Remove the bolt that secures the airbox to the vehicle and retain it for use at **Step 21**.

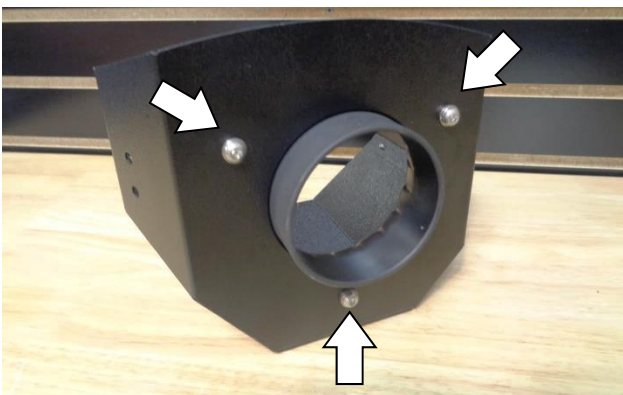


13. Remove the airbox from the vehicle by firmly pulling straight up.



14. Remove the MAF sensor from the airbox, then remove the factory gasket from the sensor.
CAUTION: The sensor is delicate! Handle it with care, and store it in a safe location until reinstallation.

ASSEMBLE AND INSTALL YOUR FLOWMASTER PERFORMANCE AIR INTAKE SYSTEM:



15. Assemble the air filter adapter (3) to the heat shield (17) using M6 screws (11), lock washers (10) and flat washers (9).



16. Attach the gasket (23) to the heat shield. Starting at the corner shown, firmly press the gasket onto the edge, gradually working around the heat shield. When you return to the starting corner, trim the gasket to fit using metal-cutting shears.



17. Attach bracket (16) to the heat shield using ¼-20 screws (7) (on the bracket side), and flat washers (4), lock washers (5) and nuts (6) (on the heat shield side).



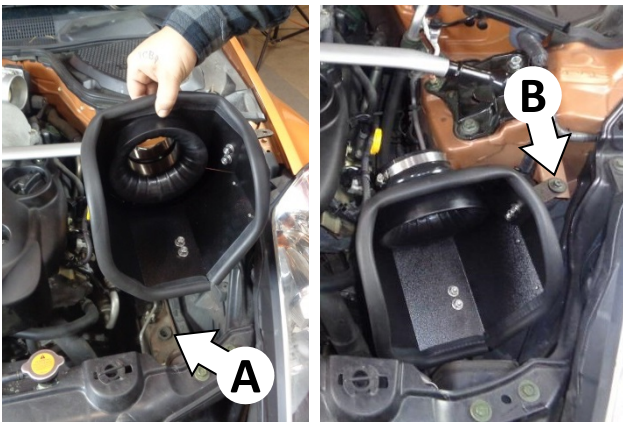
18. Attach the barbed pin (15) to the bracket using an M6 screw (11), lock washer (10) and flat washer (9).



19. Attach bracket (8) to the heat shield using ¼-20 screws (7) (on the bracket side), and flat washers (4), lock washers (5) and nuts (6) (on the heat shield side).



20. Slip two large screw clamps (12) onto the flex coupler (13). Install the coupler on the air filter adapter, pushing it flush against the heat shield. Tighten only the filter adapter clamp at this time. (Leave the other clamp loose.)



21. Install the assembled heat shield in the vehicle by pushing the barbed pin into the rear airbox mount grommet (A). Then install the stock bolt (removed at Step 12) through the bracket (B).



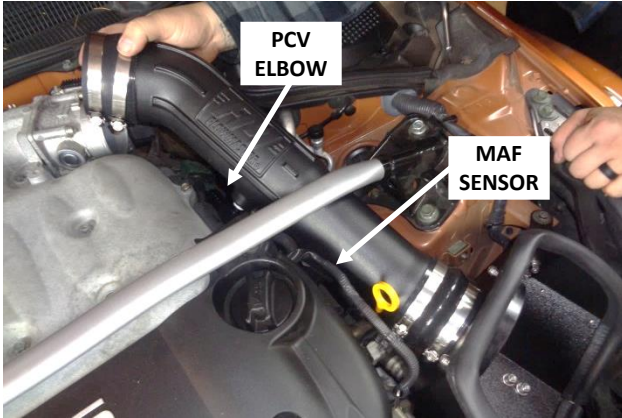
22. Apply 2 wraps of nylon thread tape to the threads of the barbed elbow (20), and install it in the intake tube (14).



23. Install the MAF sensor gasket (19) onto the sensor, ensuring correct orientation. Then install the sensor in the intake tube, using the M4 screws (18).



24. Install the other large screw clamp (12) and the small screw clamp (22) on the 3-1/2" - to - 3-1/4" coupler (21). Then install the coupler on the throttle body end of the intake tube. **Do not tighten the clamps at this time.**



25. Insert the tube loosely into the coupler on the heat shield, keeping some space alongside the tube to connect the MAF sensor lead and PCV hose.



26. Push the MAF sensor plug onto the sensor until the locking tab clicks, then check the plug for security.



27. Push the PCV hose onto the elbow, and secure it using the stock pinch clamp (removed at **Step 11**).



28. Push the coupler all the way onto the throttle body.



29. Tighten only the throttle body clamp.



30. Center the intake tube between the couplers (so that roughly an equal amount of the tube is inside each coupler), and tighten the two remaining screw clamps.



31. Place screw clamp (2) on air filter (1), install the filter on the filter adapter, and tighten the clamp.



32. Affix CARB Exemption Order Label (24) to a clean, readily-visible loca. on under the hood (e.g., near hood latch), so an inspector can easily see it at emissions testing.



Congratulations, the installation of your FLOWMASTER performance air intake kit is now complete!

FILTER MAINTENANCE:

We recommend that you clean and oil your air filter at 25,000 mile intervals using **Flowmaster's Filter Refresh Kit (PN 615001)**. See our website or your Flowmaster distributor for details.

