



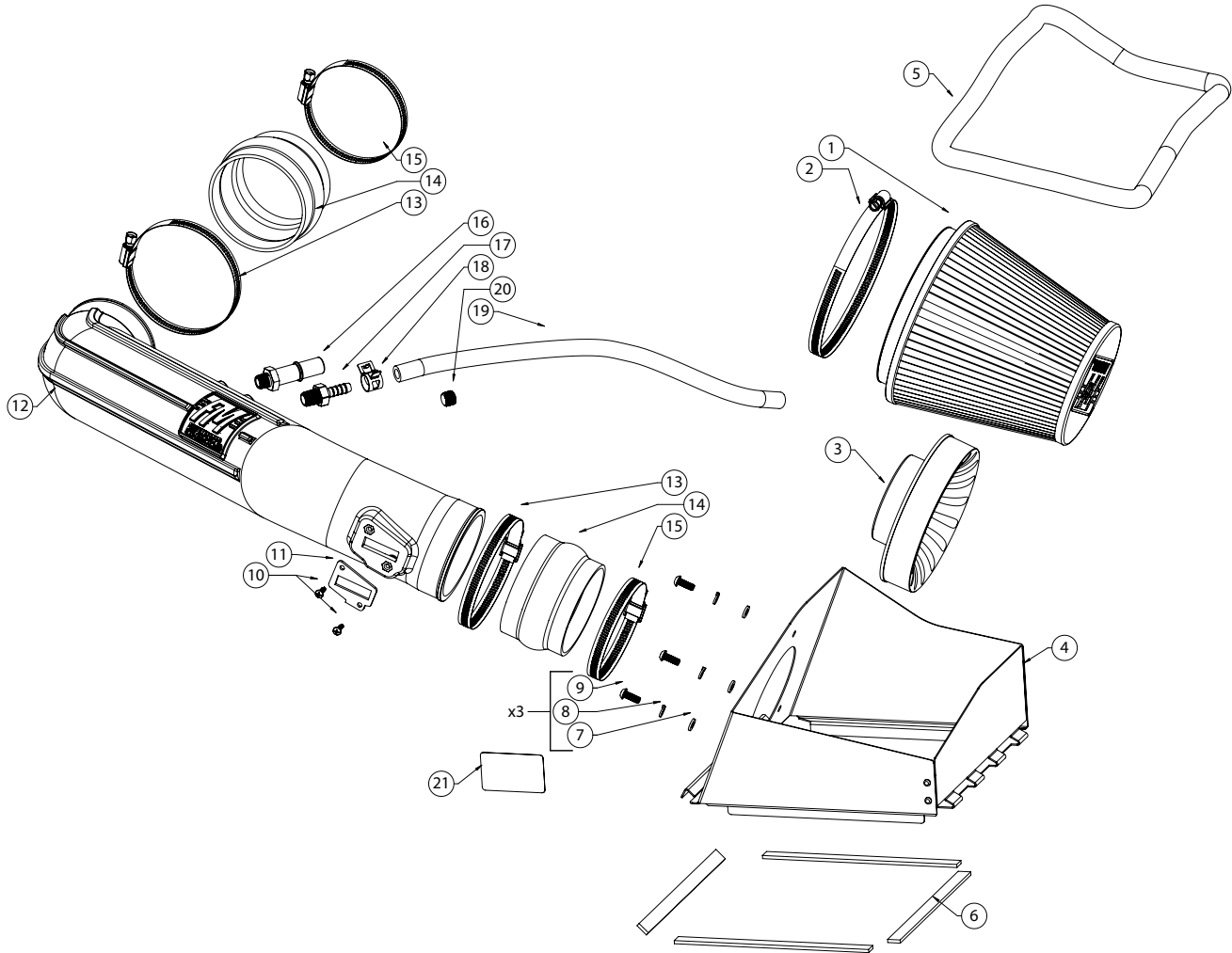
Installation Instructions

615186

2010-2014 FORD F-150 & RAPTOR 6.2L ENGINE

This kit is not engineered to fit vehicles with a body lift.

THIS INTAKE SYSTEM IS 50-STATE LEGAL FOR THE VEHICLES LISTED ABOVE PER CARB EXECUTIVE ORDER D-698-5. SEE WWW.FLOWMASTERMUFFLERS.COM FOR CARB STATUS OF INTAKE SYSTEMS FOR OTHER VEHICLES.



ITEM NO.	PART NUMBER	DESCRIPTION	QTY.
1	AF1002	AIR FILTER, 7-1/2" x 6" DIA	1
2		SCREW CLAMP, #104 (4-1/8" - 7")	1
3	AF6001	ADAPTER, AIR FILTER 3-1/2" x 6"	1
4	AF3018	HEAT SHIELD	1
5	49000061	GASKET, HEAT SHIELD	48"
6	49000067	SEAL STRIP, ADHESIVE, 1/8" x 1/2"	48"
7	HW319	FLAT WASHER, M6	3
8	HW318	LOCK WASHER, M6	3
9	HW244	SCREW, M6 x 1.0 x 16MM	3
10	HW248	SCREW, M4 x 0.7 x 12MM	2
11	GA139	GASKET, MAF SENSOR	1

ITEM NO.	PART NUMBER	DESCRIPTION	QTY.
12	AF2067	INTAKE TUBE	1
13	MC400H	SCREW CLAMP, #64 (3-9/16" - 4-1/2")	2
14	AF4069	COUPLER, FLEX 3-3/4" I.D. - 3-1/2" I.D. x 2-1/2" L	2
15	MC350H	SCREW CLAMP, #56 (3-1/16" - 4")	2
16	AF4016	FITTING, STRAIGHT 5/8" QUICK CONN TO 1/4" NPT MALE	1
17	AF4040	FITTING, STRAIGHT 3/8" BARB TO 1/4" NPT MALE	1
18	MC002P	PINCH CLAMP, 3/8" HOSE	18"
19	49000065	HOSE, 3/8" I.D.	1
20	AF4033	PLUG, 1/4" NPT	1
21	LB698-5	D-698-5 CARB EO LABEL	1

REVIEW THE INSTRUCTIONS AND VERIFY THE KIT CONTENTS:

1. Please take a moment to read and understand these instructions before installing your Flowmaster performance air intake kit.



2. Use the parts drawing and list (front page) to verify your kit's contents.

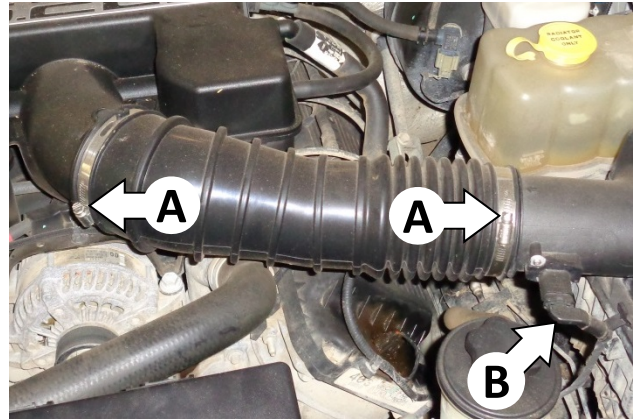
In the unlikely event that any parts are missing, please contact FLOWMASTER Technical Support for replacements.

REMOVE THE FACTORY AIR INTAKE SYSTEM:

NOTES

- We highly recommend that you retain all factory air intake system parts.
- Please refer to vehicle manufacturer's recommendations regarding removal of factory components.
- Disconnecting the negative battery cable erases pre-programmed electronic memories. Write down all memory settings before disconnecting the negative battery cable. Some radios will require an anti-theft code to be entered after the battery is reconnected. The anti-theft code is typically supplied with your owner's manual. In the event your vehicle's anti-theft code cannot be recovered, contact an authorized dealership to obtain your vehicle's anti-theft code.

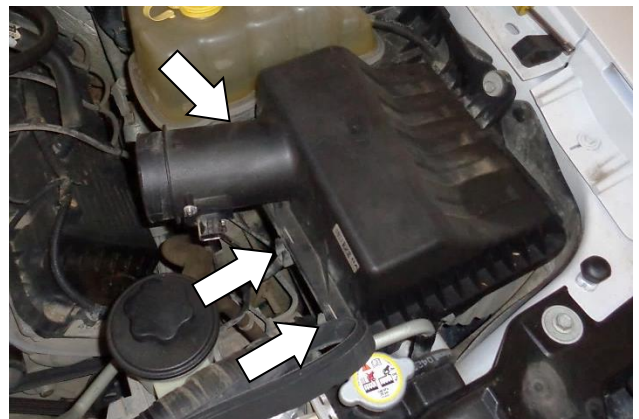
3. Turn off the vehicle's ignition and disconnect the negative battery cable.



4. Loosen the screw clamps (A) on the intake tube. Disconnect the mass airflow (MAF) sensor plug (B) by pulling its locking tab away from the sensor until it stops, then squeezing the top and bottom of plug and pulling it straight off.



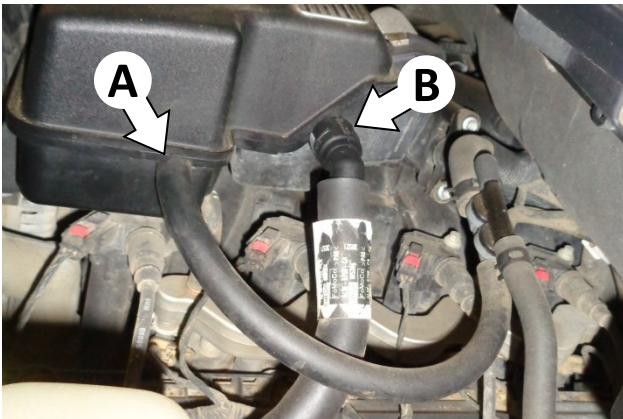
5. Separate the intake duct from the airbox cover and resonator box and remove it from the vehicle.



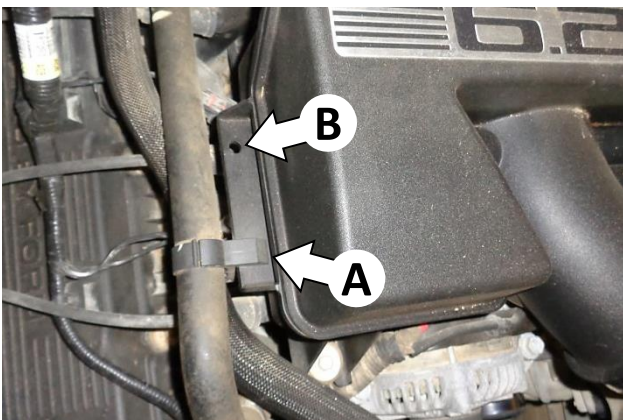
6. Release the three airbox cover latches, then remove the airbox and filter from the vehicle.



7. Remove the MAF sensor from the airbox cover, then remove the factory gasket from the sensor. **CAUTION: The sensor is delicate!** Handle it with care, and put it in a safe place until reinstallation.



8. On the right side of the resonator, remove the EVAP (A) and / or PCV (B) hose(s). (Your vehicle may have either or both hoses.) **NOTE: Release the PCV fitting by releasing its locking tab.**



9. Use a flat-tipped screwdriver to carefully release the coolant hose clamp (A) (and, if applicable, the wire loom clamp at location (B)) from the left side of resonator box.



10. Remove the two resonator box bolts. Disconnect the resonator box by carefully working it side-to-side and forward until it clears the throttle body, then remove it from vehicle.

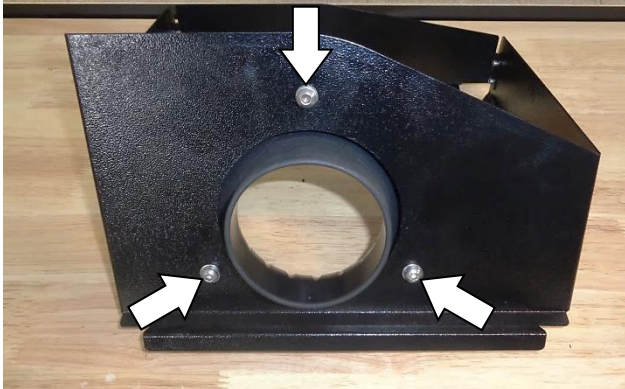


11. Loosen the screw clamp on the throttle body adaptor, then remove the adaptor from the throttle body.



12. Disconnect the other end of the EVAP hose (if applicable to your vehicle) from the vacuum check valve, and remove it from the vehicle.

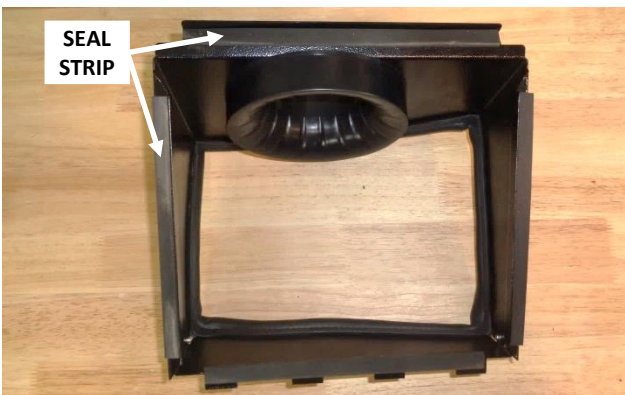
ASSEMBLE AND INSTALL YOUR FLOWMASTER PERFORMANCE AIR INTAKE SYSTEM:



13. Assemble the air filter adapter (3) to the heat shield (4) using the M6 screws (9), lock washers (8) and flat washers (7).



14. Firmly press the gasket (5) onto the edge of the heat shield, gradually working your way around. When you return to the starting point, use metal-cutting shears to trim the gasket to length.



15. Cut the adhesive seal strip (6) to the lengths required, and apply it to the four bottom edges of the heat shield.



16. Slip the #56 screw clamp (15) onto the small end of a coupler (14), and install the coupler on the filter adapter. Push the coupler up against the heat shield, and tighten the clamp. Then slip the #64 screw clamp (13) onto the other end of the coupler.



17. Slip screw clamp (2) onto the air filter (1), then install the filter on the filter adapter and tighten the clamp.



18. Your vehicle may require either the 5/8" quick connect (QC) fitting (16), or the 3/8" barbed fitting (17), or both. If it uses only one fitting, install the 1/4" plug (20) in the unused port. Apply 2 wraps of nylon thread tape to threads of the required hardware, and install them in the intake tube (12).



19. Install the MAF sensor gasket (11) over the sensor, then install the sensor in the intake tube, ensuring the correct orientation of the gasket and sensor to the mount pad. Secure the sensor using M4 screws (10).



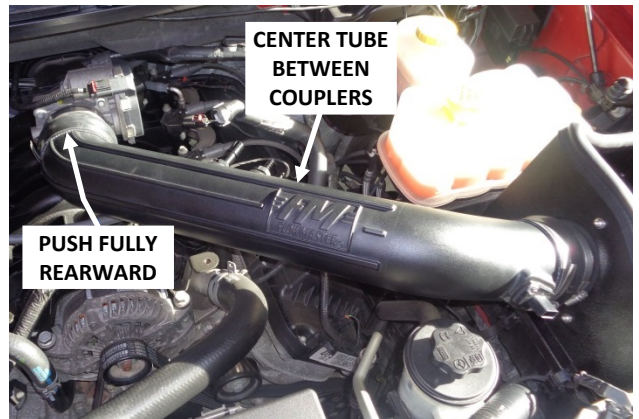
20. Slip a #64 screw clamp (13) onto the large end of the other coupler (14), install the coupler on the discharge end of the intake tube, and snug (do not tighten) the clamp. Then slip a #56 screw clamp (15) onto the other end of the coupler.



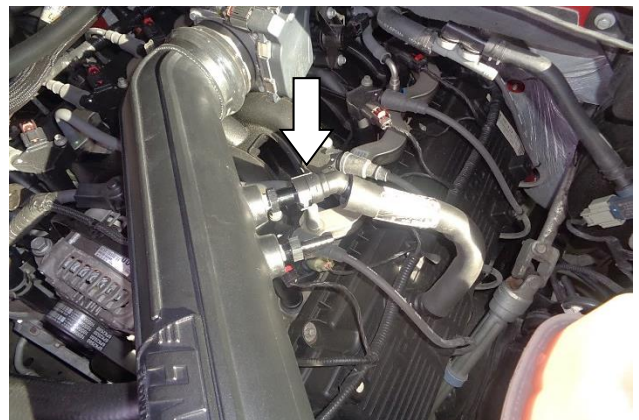
21. Insert the heat shield's four tabs into the matching slots on the lower airbox, then secure the heat shield using two airbox cover latches. **NOTE: The center latch is not used.**



22. Install the intake tube between the heat shield and throttle body.



23. Push the rear coupler up against the stops on the throttle body, and tighten the throttle body clamp. Then center the intake tube between the couplers, and tighten the two tube clamps.



24. If applicable to your vehicle, connect the PCV hose to the QC fitting, and verify that it is securely latched.



25. If applicable to your vehicle, push one end of the 3/8" I.D. hose (19) onto the vacuum check valve. Cut the hose to length, and use the pinch clamp (18) to secure it to the 3/8" barbed fitting.



26. Reconnect the MAF sensor plug to the sensor, push the locking tab toward the sensor, and verify the connection is secure.

FLOWMASTER CARB EO #
THE PERFORMANCE TECHNOLOGY COMPANY

DELTA FORCE PERFORMANCE INTAKE

D-698-5

FLOWMASTER INC. • 866-464-6553
 1801 RUSSELLVILLE ROAD, BOWLING GREEN, KY 42101

27. Affix the CARB Exemption Order label to a clean, readily-visible location under the hood (e.g., near the hood latch), so an inspector can easily see it at emissions testing.



Congratulations, the installation of your FLOWMASTER performance air intake kit is now complete!

VECI LABEL NOTE

California emissions law requires the Vehicle Emission Control Information (or VECI) label to be readily-visible in the engine compartment.

If your VECI label is affixed to the stock airbox, a replacement label must be obtained and affixed to a suitable location in the engine compartment.

Replacement VECI labels can be ordered from the dealership by VIN number. The VECI label should be affixed somewhere that is NOT easily removed from the vehicle.

NOTE: A missing VECI label may result in failure of the vehicle's emissions test.

FILTER MAINTENANCE:

We recommend that you clean and oil your air filter at 25,000 mile intervals using **Flowmaster's Filter Refresh Kit (PN 615001)**. See our website or your Flowmaster distributor for details.

IMPORTANT: RETAIN THESE INSTRUCTIONS FOR FUTURE REFERENCE

