



Installation Instructions
717858
2019-24 GM SILVERADO/SIERRA 1500
5.3L ENGINE
2/4 Wheel Drive & 148", 157" Wheelbase
Does not fit crew cab, two-wheel drive with two-piece driveshaft or trucks with factory dual exit tailpipes.

OVERVIEW:

1. Take a moment to read and understand these instructions before installing your Flowmaster performance system.

NOTE: Please inventory all parts now before continuing and if necessary, report any missing items to our tech line. This will avoid potentially stranding your vehicle until any missing replacement parts arrive.

ITM #	PART #	DESCRIPTION	QTY.
1	26740M	Inlet Pipe	1
2	TB700M	Extension Pipe	1
3	72149-Z	Muffler	1
4	26741M	Tailpipe	1
5	ST509B	Black Tip	1
N/A	PK978	Hardware Pack includes:	1
6	MC300BS	3" Band Clamp	3
7	HW503	½" Hanger Keeper	4

REMOVE STOCK EXHAUST SYSTEM:

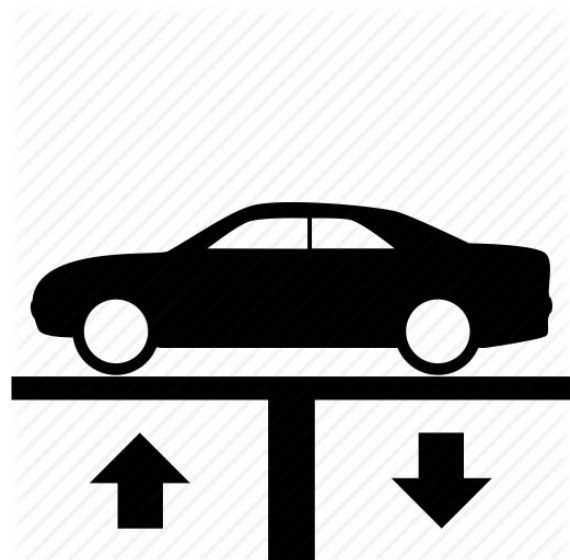
2. Raise vehicle up on a hoist or rack to working height. If you don't have access to a hoist or rack, support vehicle with jack stands.

WARNING:

Avoid serious burns! Allow your vehicle time to cool completely before touching any factory engine components.

To ease preparation and installation of your new kit:

- Apply penetrating lubricant to mounts, bolts and clamps before you remove them.
- Use stands as necessary to support parts as you detach them from your vehicle and again as you install new parts.



3. Cut tailpipe at muffler exit. Disassemble hanger wires from isolators and remove tailpipe section from vehicle.



4. Support muffler and disassemble wire hangers from isolators. Loosen ball clamp, disconnect inlet pipe at cat. converter and remove exhaust system. Release tab to remove clamp from pipe and retain it for later use.



INSTALL FLOWMASTER EXHAUST SYSTEM

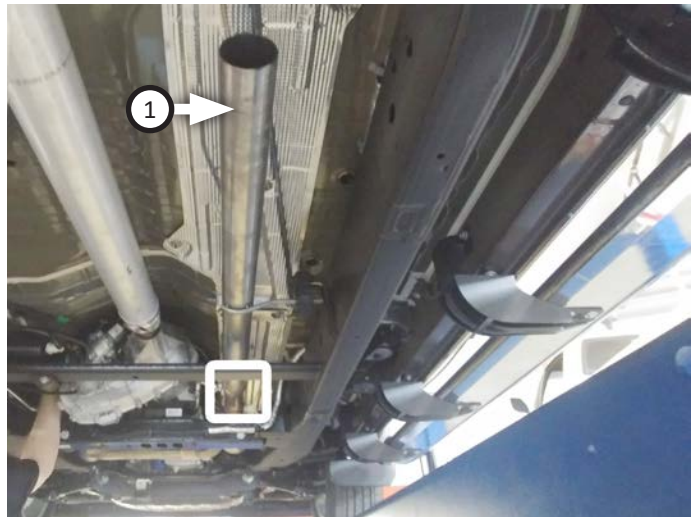
5. Remove nuts from stock and Flowmaster clamps, apply anti-seize compound to bolts and re-install nuts.
NOTE: The image in this step is intended for illustrative purposes only and may or may not accurately reflect components included in your kit.
6. Every slip fit connection in this kit must seat 3" deep except for muffler connections which must seat 2" deep. Find all slip fit components in your kit and mark them accordingly so your Flowmaster exhaust system fits properly onto your vehicle.



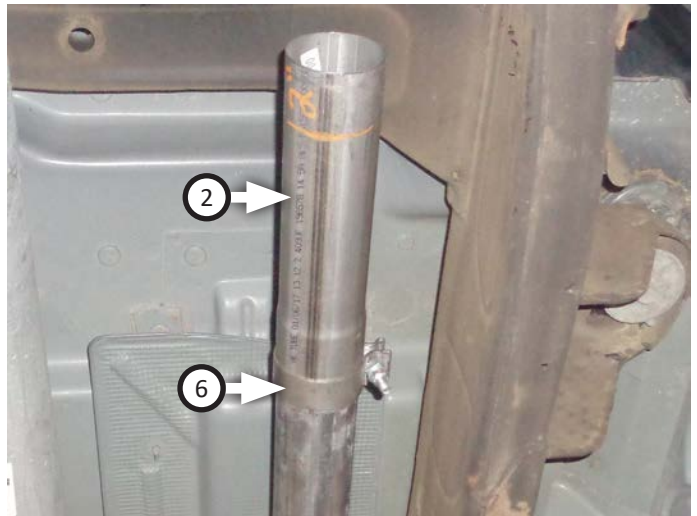
7. Find your vehicle within specifications listed below, and if necessary, apply corresponding modifications to ensure it will install properly.

WHEEL BASE	BODY STYLE	BED LENGTH	INLET ASSY:
148"	Crew Cab	5'8	Inlet Pipe only
157"	Crew Cab	6'5	Inlet+Extension
148"	Double Cab	6'5	Inlet Pipe only

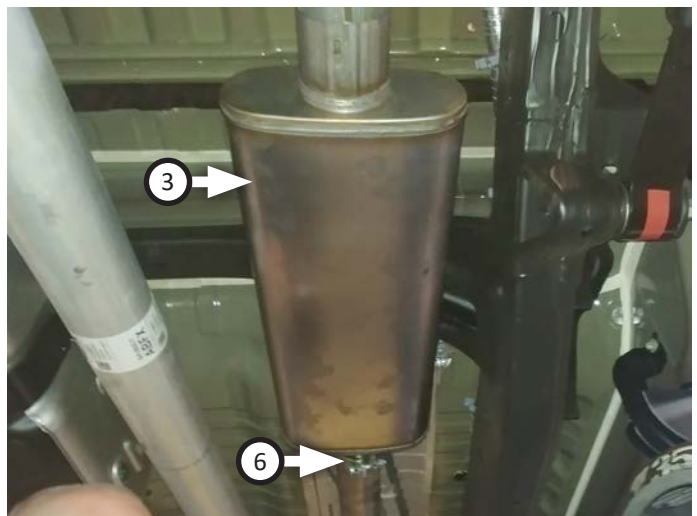
8. Place clamp (removed step 4) onto **inlet pipe (1)**. Connect inlet pipe to catalytic converter and mount wire hanger into factory isolator. Tighten clamp just enough to allow for adjustment.



9. If applicable, place **clamp (6)** onto **extension (2)** then connect it to inlet pipe. Tighten clamp just enough to allow for adjustment.



10. Place **clamp (6)** onto **muffler (3)** then connect it to inlet/extension pipe. Tighten clamp just enough to allow for adjustment then place **clamp (6)** onto muffler outlet.



11. Route **tailpipe (4)** over axle then connect it to muffler. Insert wire hangers into isolators then tighten clamp just enough to allow for later adjustment.



12. Place **black tip (5)** onto tailpipe and tighten inlets. Rotate pipes to desired distance from body or bumper, so angle cut on tip is properly positioned.
13. Adjust exhaust components for fit; maintaining ½" clearance and compensating for suspension, travel and vibration, then tighten all clamps. Finally, fit (x4) **hanger keepers (7)** onto each sideways hanger.
14. Recommended: Secure slip-fit connections with a 1-inch tack weld then spray high-temp paint over each weld to prevent rust and premature corrosion.



Congratulations, the installation of your FLOWMASTER performance exhaust system is now complete!





Installation Diagram

717858

2019-24 GM SILVERADO/SIERRA 1500

5.3L ENGINE

2/4 Wheel Drive & 148", 157" Wheelbase

Does not fit crew cab, two-wheel drive with two-piece driveshaft or trucks with factory dual exit tailpipes.

