



Installation Instructions  
**717868**  
 2004-08 FORD F-150 TRUCKS  
 4.6L & 5.4L ENGINE  
 2/4 wheel drive & all wheelbases

## OVERVIEW:

1. Take a moment to read and understand these instructions before installing your Flowmaster performance system.

**NOTE:** Please inventory all parts now before continuing and if necessary, report any missing items to our tech line. This will avoid potentially stranding your vehicle until any missing replacement parts arrive.

ITM #	PART #	DESCRIPTION	QTY.
1	26763M	Inlet Pipe	1
2	72288-Z	FFX Muffler	1
3	26206M	Extension Pipe	1
4	86590M	Left Front Tailpipe	1
5	86591M	Right Tailpipe	1
6	86592M	Left Rear Tailpipe	1
7	86593M	Side Exit Pipe	2
8	ST507B	Tips	2

ITM #	PART #	DESCRIPTION	QTY.
N/A	PK1002	Hardware Package includes:	1
9	507HA	Front Clamp Hanger	1
10	MC300BS	3" Stainless Band Clamp	2
11	MC250BS	2½" Stainless Band Clamp	6
12	211HA	Rear Frame Mount	1
13	HA168	Rubber Hanger - Red	1
14	HW205	⅝"-18 x 1¼ Bolt	1
15	HW102	⅝"-18 Z 5 Nut	1
16	HW302	USS ⅝" Z Flat Washer	1
17	HW308	Z ⅝" Lock Washer	1
18	HW502	⅝" Hanger Keeper	2

## REMOVE STOCK EXHAUST SYSTEM:

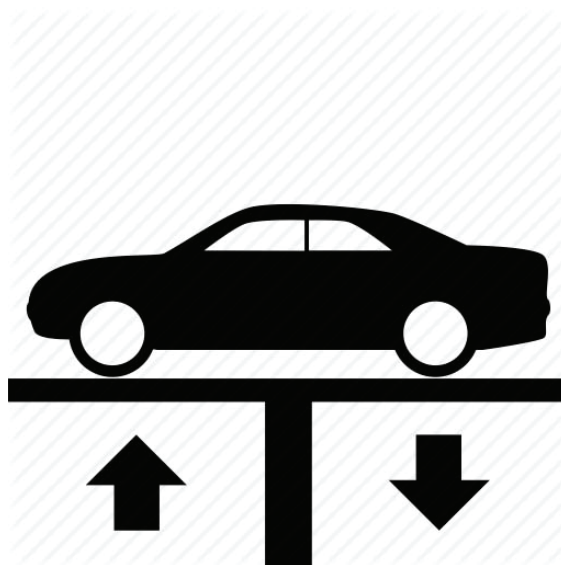
2. Raise vehicle up on a hoist or rack to working height. If you don't have access to a hoist or rack, support vehicle with jack stands.

### WARNING:

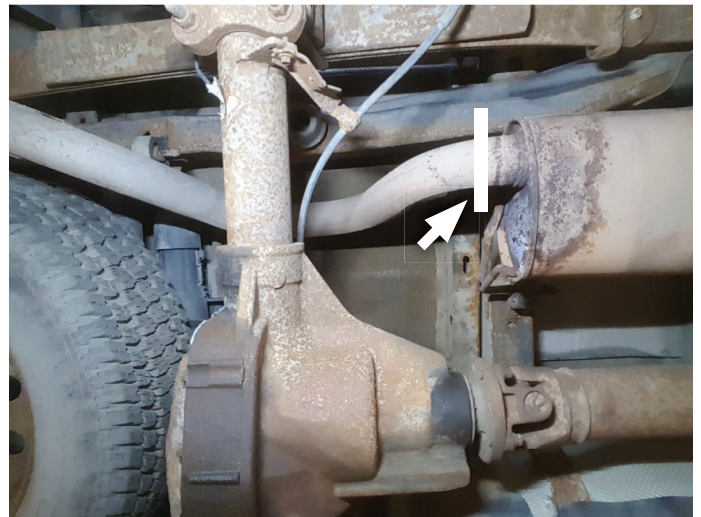
Avoid serious burns! Allow your vehicle time to cool completely before touching any factory engine components.

### To ease preparation and installation of your new kit:

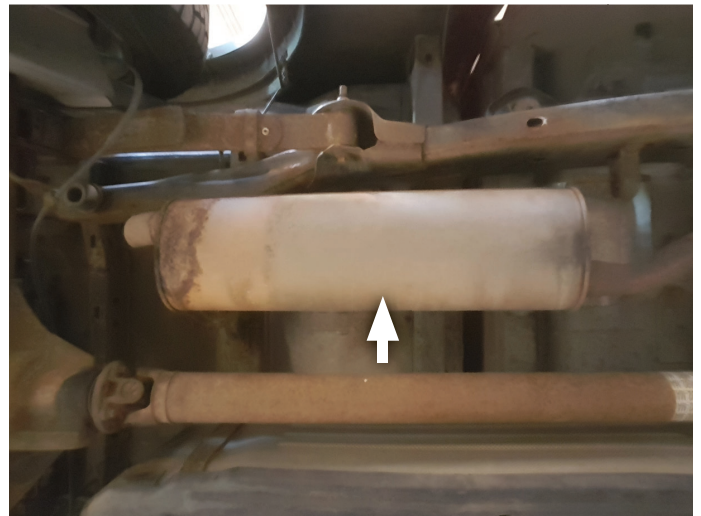
- Apply penetrating lubricant to mounts, bolts and clamps before you remove them.
- Use stands as necessary to support parts as you detach them from your vehicle and again as you install new parts.



3. Cut tailpipe where it exits muffler. Disassemble wire hanger on tailpipe then remove it from vehicle.



4. Remove band clamp securing factory inlet pipe to converter Y-Pipe. Dismount wire hangers from mounts then remove muffler assembly and set aside.



## INSTALL FLOWMASTER EXHAUST SYSTEM

5. Remove nuts from stock and Flowmaster clamps, apply anti-seize compound to bolts and re-install nuts.

**NOTE:** The image in this step is intended for illustrative purposes only and may or may not accurately reflect components included in your kit.

6. Every slip fit connection in this kit must seat 3" deep except for muffler connections which must seat 2" deep. Mark all slip fit components in your kit and mark them accordingly so your Flowmaster exhaust system fits properly onto your vehicle.

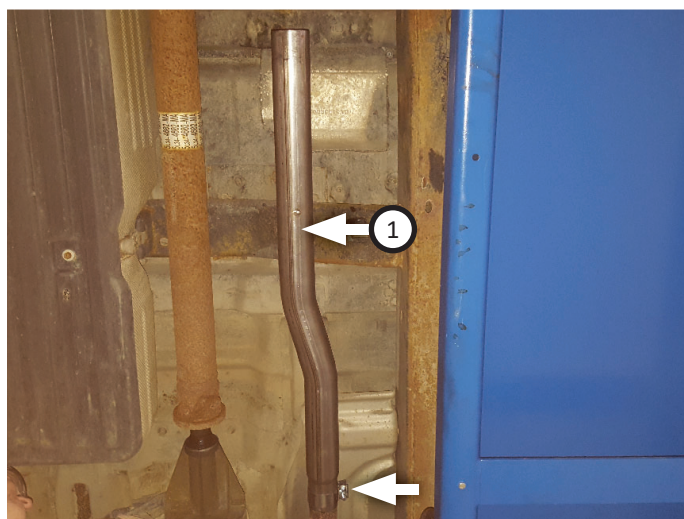




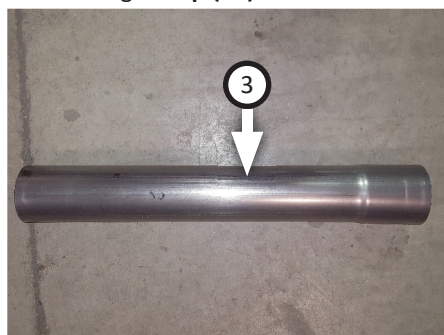
7. If your vehicle falls within the specifications listed below, apply the corresponding modifications or assembly combinations to this kit to ensure it will install properly.

WHEEL BASE	BODY STYLE	BED LENGTH	INLET ASSY:	MODIFICATION
126"	Regular Cab	6.5'	Inlet Pipe only	Trim 18½" from inlet pipe
145"	Regular Cab	8'	Inlet Pipe only	None
133"	SuperCab	5.5'	Inlet Pipe only	Trim 12" from inlet pipe
145"	SuperCab	6.5'	Inlet Pipe only	None
163"	SuperCab	8'	Inlet+Extension	None
139"	SuperCrew	5.5'	Inlet Pipe only	Trim 6" from inlet pipe
151"	SuperCrew	6.5'	Inlet+Extension	Trim 12" from exten. pipe

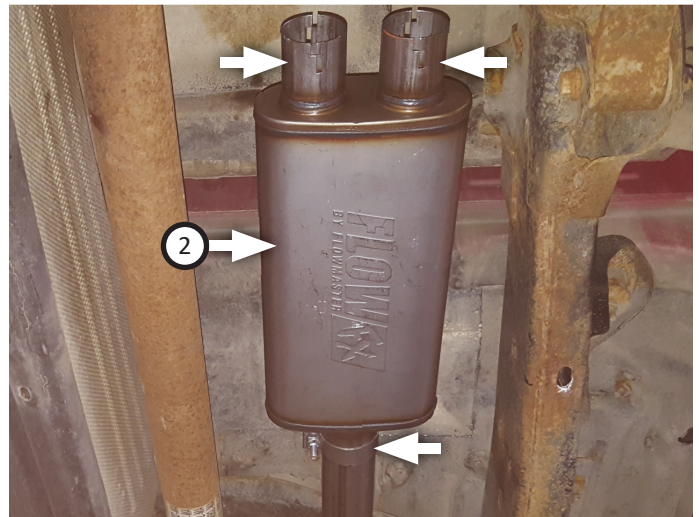
8. Place **clamp (11)** onto **inlet pipe (1)** and connect it to converter Y-pipe. Tighten clamp enough to allow for adjustments.



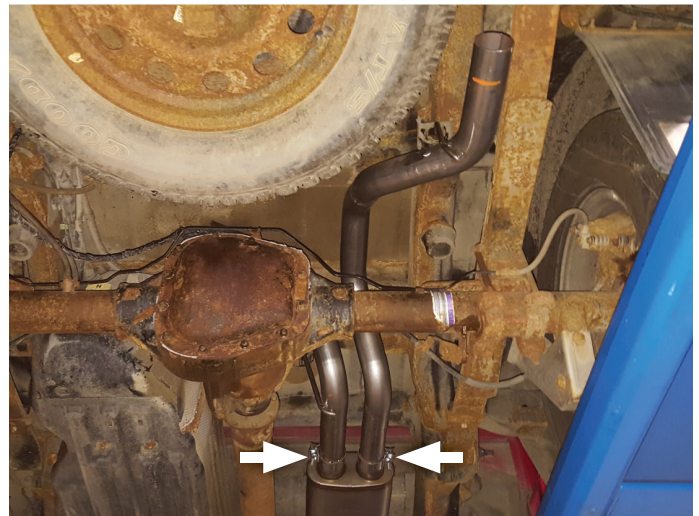
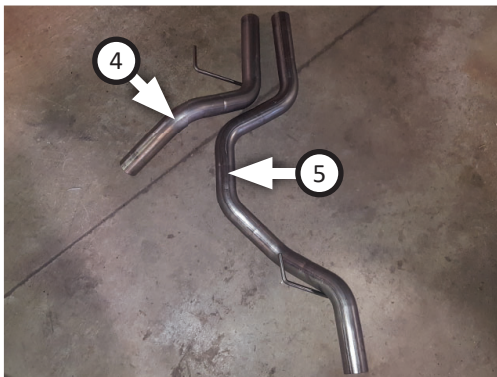
9. Place **front clamp hanger (9)** onto inlet pipe then insert wire hanger into isolator. Once oriented properly, tighten clamp completely.
10. For applicable builds: Connect **extension pipe (3)** to inlet pipe and secure it using **clamp (10)**.



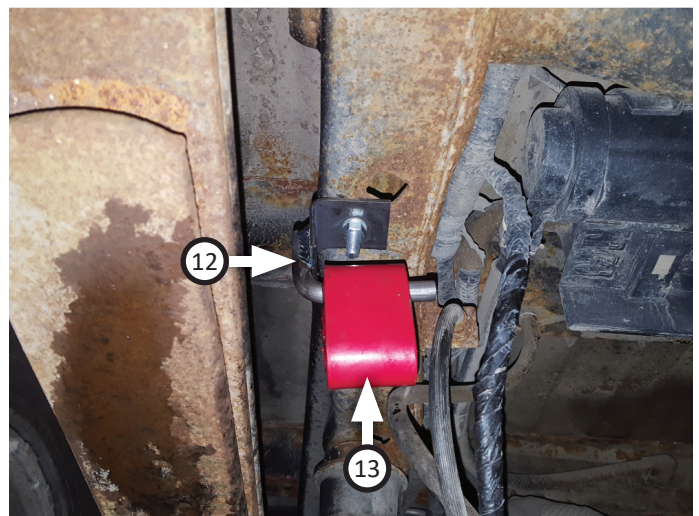
11. Place **clamp (10)** onto **muffler (2)** inlet then connect muffler to inlet pipe or extension. Tighten clamp just enough to allow for adjustment. Place (x2) **clamps (11)** onto muffler outlets.



12. Route **right (5)** and **left front (4)** tailpipe over axle and connect them to muffler outlets. Insert wire hangers into isolators then tighten clamps (x2) just enough to allow for adjustment.

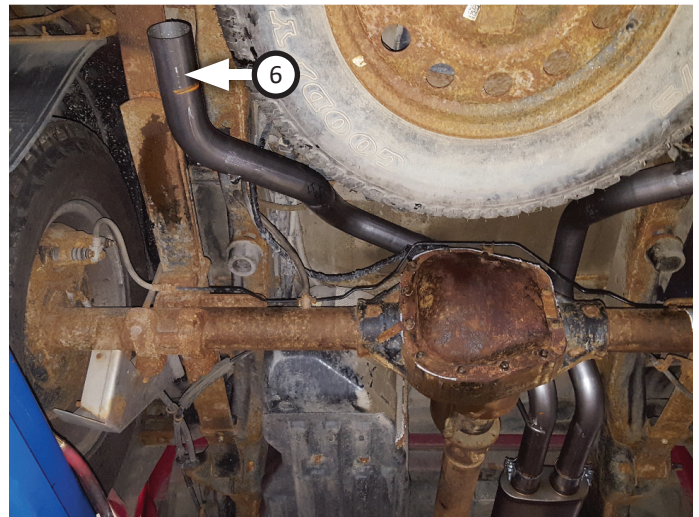


13. Secure **rear frame mount (12)** to vehicle using **bolt (14)** through frame, mount, **flat washer (16)**, **lock washer (17)** and **nut (15)**. Fit **rubber hanger (13)** onto mount.

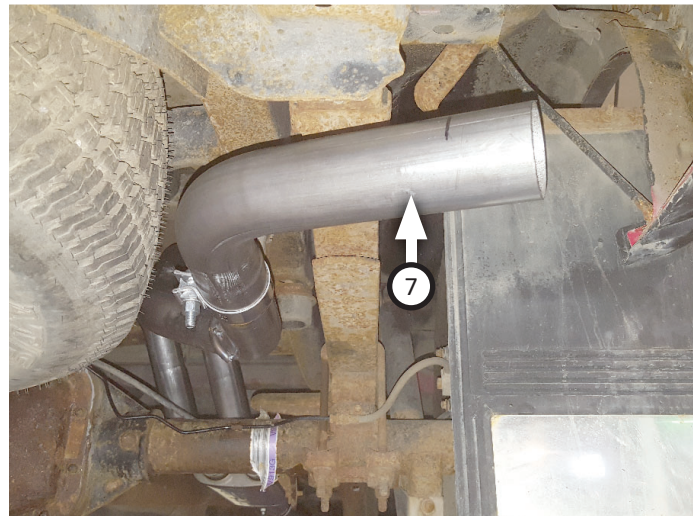
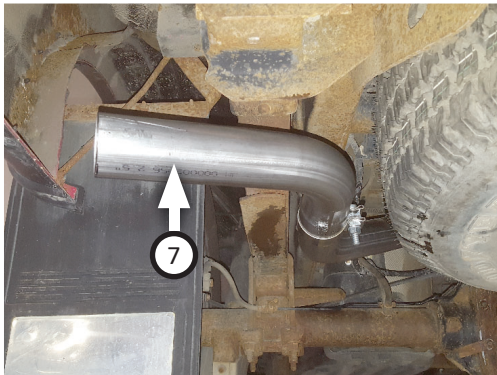




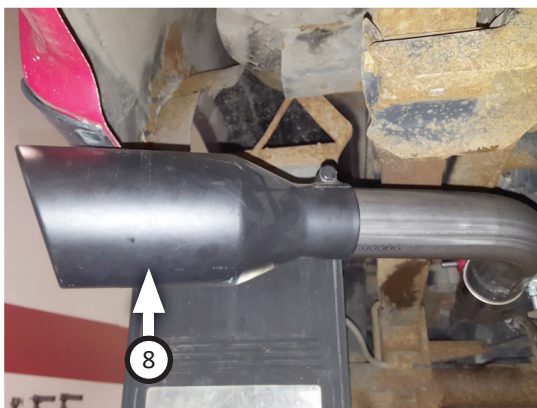
14. Place **clamp (11)** onto **left rear tailpipe (6)** then connect it to left front tailpipe. Insert wire hanger into rubber hanger then tighten clamp just enough to allow for adjustment.



15. Place (x2 ea.) **clamps (11)** onto **side exit pipes (7)** then connect them to tailpipes. Tighten clamps just enough to allow for adjustment.



16. Connect (x2) **tips (8)** to side exit pipes and secure connections.



17. Adjust exhaust components for fit; maintaining ½" clearance and compensating for suspension, travel and vibration, then tighten all clamps. Finally, fit (x2) **hanger keepers (18)** onto each sideways hanger.
18. Recommended: Secure slip-fit connections with a 1-inch tack weld then spray high-temp paint over each weld to prevent rust and premature corrosion.



---

Congratulations, the installation of your FLOWMASTER performance exhaust system is now complete!





Installation Diagram  
**717868**  
2004-08 FORD F-150 TRUCKS  
4.6L & 5.4L ENGINE  
2/4 wheel drive & all wheelbases

