



Installation Instructions
717874
2009-13 SILVERADO/SIERRA 1500
4.8L, 5.3L ENGINE
Crew Cab & Extended Cab models
143.5, 157.5 Wheelbase

OVERVIEW:

1. Take a moment to read and understand these instructions before installing your Flowmaster performance system.

NOTE: Please inventory all parts now before continuing and if necessary, report any missing items to our tech line. This will avoid potentially stranding your vehicle until any missing replacement parts arrive.

ITM #	PART #	DESCRIPTION	QTY.
1	26755M	Inlet Pipe	1
2	909TBM	Extension Pipe	1
3	71249-Z	FFX Muffler	1
4	26756M	Tailpipe Assembly	1
5	ST509B	Tip	1
N/A	PK1001	Hardware Pack includes:	1
6	506HA	Front Clamp Hanger Assembly	1
7	MC300BS	3" Stainless Band Clamp	3
8	HW503	½" Hanger Keeper	5

REMOVE STOCK EXHAUST SYSTEM:

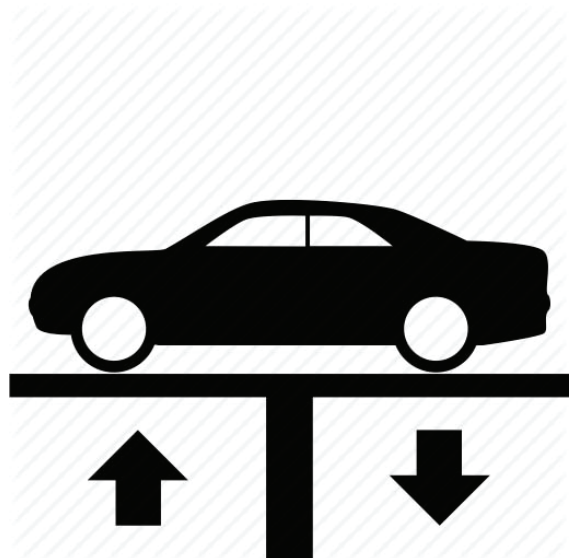
2. Raise vehicle up on a hoist or rack to working height. If you don't have access to a hoist or rack, support vehicle with jack stands.

WARNING:

Avoid serious burns! Allow your vehicle time to cool completely before touching any factory engine components.

To ease preparation and installation of your new kit:

- Apply penetrating lubricant to mounts, bolts and clamps before you remove them.
- Use stands as necessary to support parts as you detach them from your vehicle and again as you install new parts.



- Cut tailpipe just behind muffler outlet, disassemble wire hangers from isolators and remove cut tailpipe section.



- Disassemble wire hanger from isolator, loosen ball clamp and remove muffler section. Release tab to remove ball clamp from pipe and retain it for later use.



INSTALL FLOWMASTER EXHAUST SYSTEM

- Remove nuts from stock and Flowmaster clamps, apply anti-seize compound to bolts and re-install nuts.

NOTE: The image in this step is intended for illustrative purposes only and may or may not accurately reflect components included in your kit.

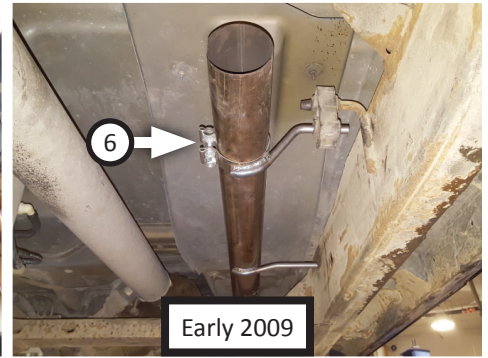
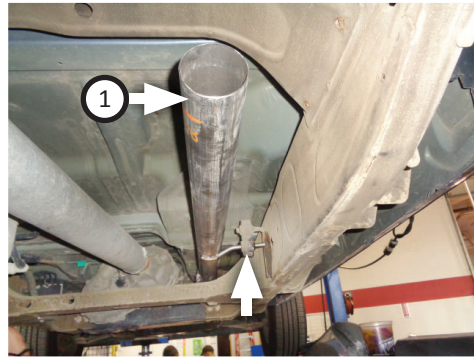
- Check which specifications apply to your vehicle below, then apply the corresponding assembly combinations to ensure this kit installs properly.

WHEEL BASE	BODY STYLE	BED LENGTH	INLET ASSY:
143½"	Extended Cab	6'5"	Don't install extension
143½"	Crew Cab	5'5"	Don't install extension
157½"	Extended Cab	8'	Install extension



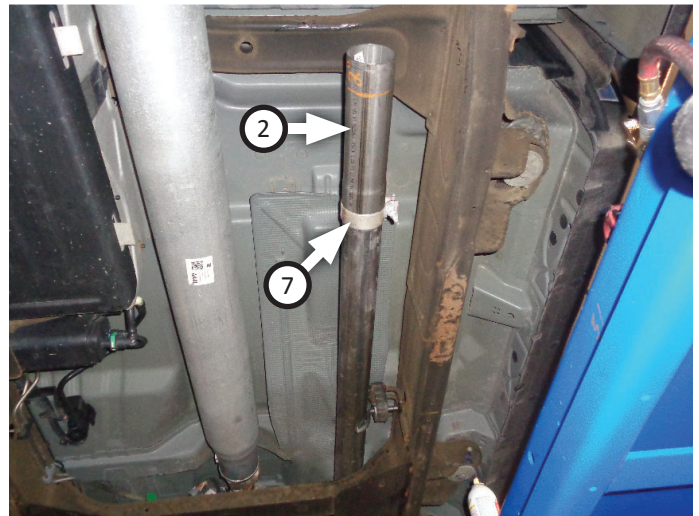
7. Place ball clamp (removed step 4) onto **inlet pipe (1)** then connect it to catalytic converter. Insert wire hanger into isolator and tighten clamp just enough to allow for later adjustment.

NOTE: For some early 2009 models, the mount hanger is attached further rearward on frame. In this case, install **front clamp hanger (6)** onto inlet pipe then insert it into isolator.

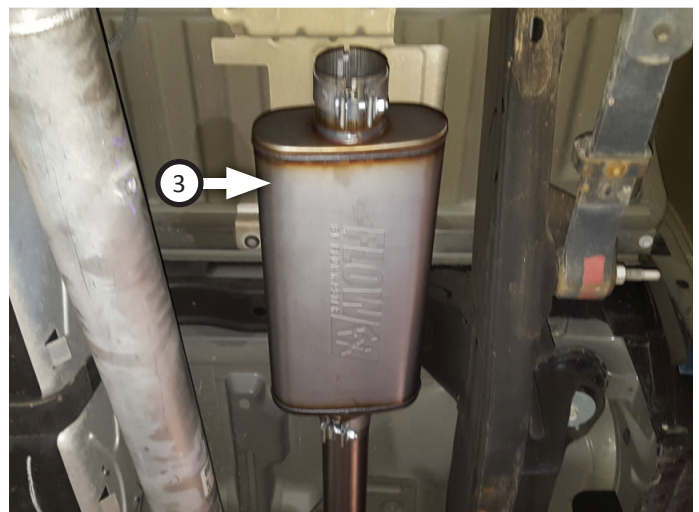


8. For applicable models, place **clamp (7)** onto **extension pipe (2)** then connect it to inlet pipe. Tighten clamp just enough to allow for later adjustment.

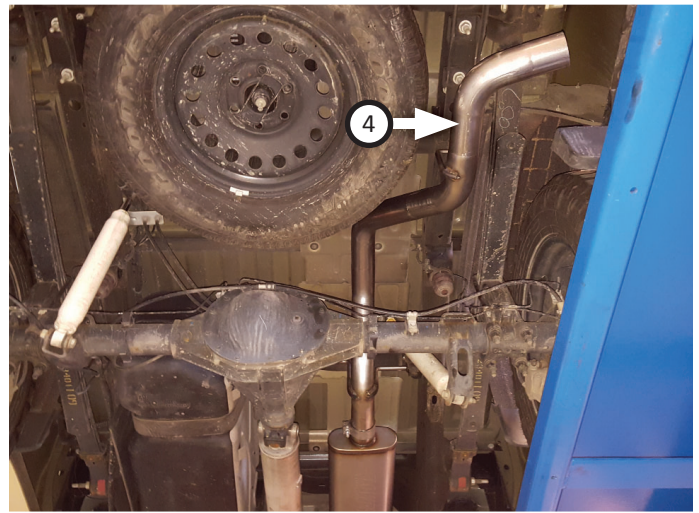
NOTE: Every slip fit connection in this kit must seat 3" deep except for the (x3) muffler connections which must seat 2" deep. Locate all components in your kit with a slip fit connection and mark them accordingly so your Flowmaster exhaust system fits properly onto your vehicle.



9. Place **clamps (x2) (7)** onto **muffler (3)** and connect it to inlet/extension pipe. Tighten front clamp just enough to allow for adjustment.



10. Route **tailpipe assembly (4)** over axle and connect it to muffler outlet. Mount wire hangers into isolators (x3) then tighten clamp enough to allow for adjustment.



11. Install **tip (5)** onto tailpipe and tighten inlet.
12. Adjust exhaust components to provide a satisfactory fit. Maintain a minimum of ½" clearance around all components of the exhaust system, keeping in mind suspension, travel and vibration. After making any required adjustments, securely tighten all clamps.
13. Slide **hanger keepers (x5) (5)** onto each sideways hanger to prevent components from slipping out.
14. We recommend applying a one inch tack weld to all slip-fit connections for a more secure installation. You may also apply high temperature paint over welded areas to prevent rust and premature corrosion.



Congratulations, the installation of your FLOWMASTER performance exhaust system is now complete!





Installation Diagram
717874
2009-13 SILVERADO/SIERRA 1500
4.8L, 5.3L ENGINE
Crew Cab & Extended Cab models
143.5, 157.5 Wheelbase

