



Installation Instructions  
**717880**  
1997-99 JEEP WRANGLER TJ  
2.5L & 4.0L ENGINE  
RWD & 4WD

### OVERVIEW:

1. Take a moment to read and understand these instructions before installing your Flowmaster performance system.

**NOTE:** Please inventory all parts now before continuing and if necessary, report any missing items to our tech line. This will avoid potentially stranding your vehicle until any missing replacement parts arrive.

ITM #	PART #	DESCRIPTION	QTY.
1	71416-530	Muffler	1
2	86555M	Tailpipe	1
N/A	PK983	Hardware Package includes:	1
3	MC225BS	2¼" Stainless Band Clamp	1
4	MC250BS	2½" Stainless Band Clamp	1
5	HW502	¾" Hanger Keeper	2

### REMOVE STOCK EXHAUST SYSTEM:

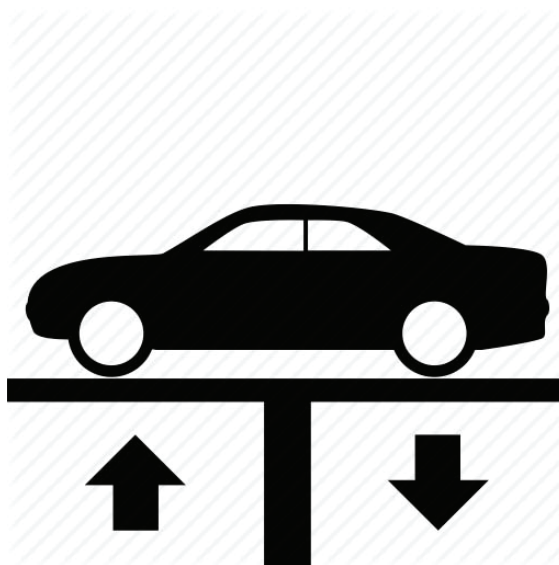
2. Raise vehicle up on a hoist or rack to working height. If you don't have access to a hoist or rack, support vehicle with jack stands.

**WARNING:**

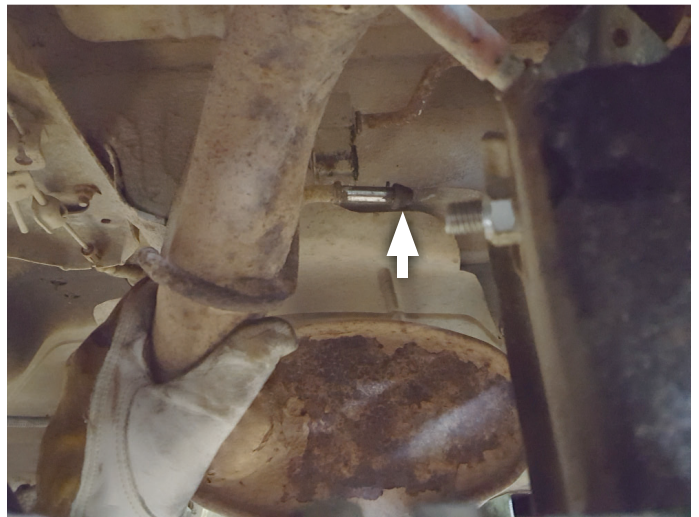
Avoid serious burns! Allow your vehicle time to cool completely before touching any factory engine components.

**To ease preparation and installation of your new kit:**

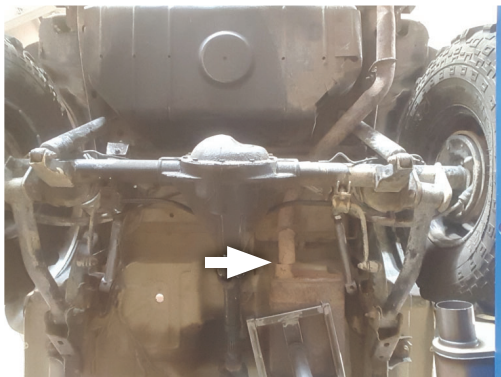
- Apply penetrating lubricant to mounts, bolts and clamps before you remove them.
- Use stands as necessary to support parts as you detach them from your vehicle and again as you install new parts.



3. Dismount factory tailpipe wire hangers (x2) from isolators.



4. Cut tailpipe just behind factory muffler then remove completely from vehicle.



5. Remove clamp and disassemble muffler from catalytic converter then remove muffler from vehicle.





## INSTALL FLOWMASTER EXHAUST SYSTEM

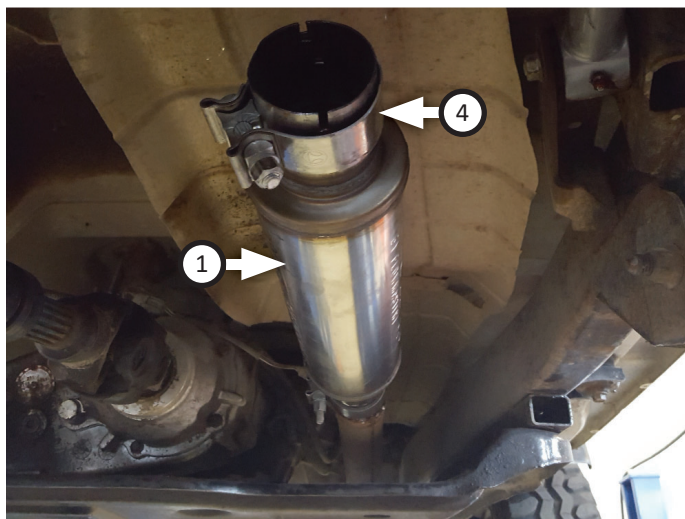
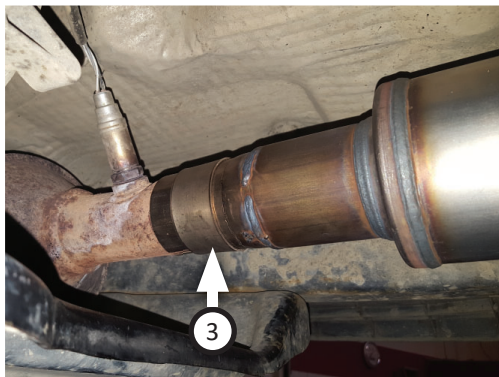
6. Remove nuts from stock and Flowmaster clamps, apply anti-seize compound to bolts and re-install nuts.

**NOTE:** The image in this step is intended for illustrative purposes only and may or may not accurately reflect components included in your kit.

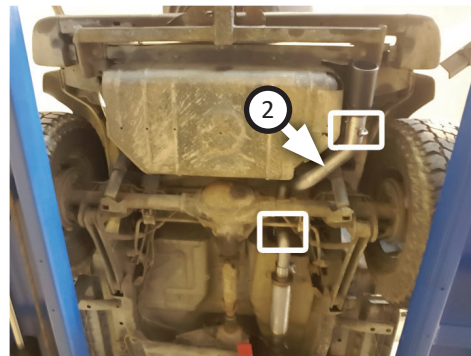
7. Muffler connections must seat 2" deep. Find and mark your muffler accordingly so your Flowmaster exhaust system fits properly onto vehicle.



8. Place **clamp (3)** onto **muffler (1)** inlet then connect it to factory exhaust outlet. Tighten front clamp just enough to hold parts. Place **clamp (4)** onto muffler outlet.



9. Route **tailpipe (2)** over rear axle then connect it to muffler. Insert wire hangers (x2) into factory isolators then tighten clamp just enough to allow for adjustment.



10. Adjust exhaust components for fit; maintaining  $\frac{1}{2}$ " clearance and compensating for suspension, travel and vibration, then tighten all clamps. Finally, fit (x2) **hanger keepers (5)** onto each sideways hanger.
11. Recommended: Secure slip-fit connections with a 1-inch tack weld then spray high-temp paint over each weld to prevent rust and premature corrosion.



---

Congratulations, the installation of your FLOWMASTER performance exhaust system is now complete!





Installation Diagram  
**717880**  
1997-99 JEEP WRANGLER TJ  
2.5L & 4.0L ENGINE  
RWD & 4WD

