



Installation Instructions
717923
 1996-99 GM SILVERADO/SIERRA 1500
 5.7L ENGINE
 2/4 WD, 141.5" Wheelbase Only

OVERVIEW:

1. Take a moment to read and understand these instructions before installing your Flowmaster performance system.

NOTE: Please inventory all parts now before continuing and if necessary, report any missing items to our tech line. This will avoid potentially stranding your vehicle until any missing replacement parts arrive.

ITM #	PART #	DESCRIPTION	QTY.
N/A	PK1020	Hardware Package includes:	1
8	166HA	T-Pipe Hanger Bracket	1
9	HA168	Red Rubber Hanger	1
10	MC300BS	3" Stainless Band Clamp	1
11	MC250BS	2½" Stainless Band Clamp	5
12	HW208	¾"-16x1 HC Bolt	2
13	HW103	¾"-16 Z 5 Nut	2
14	HW303	¾" Flat Washer	2
15	HW309	¾" Lock Washer	2
16	HW502	7/16" Hanger Keeper	2
17	HW503	½" Hanger Keeper	3
18	HW504	8" Zip Tie	1
19	GA105	Dual Hole Gasket	1

ITM #	PART #	DESCRIPTION	QTY.
1	26046M	Cat Pipe Assembly	1
2	72288-Z	FlowFX Muffler	1
3	86620M	Left Front Tailpipe	1
4	86621M	Right Tailpipe	1
5	86622M	Left Rear Tailpipe	1
6	86532M	Side Exit Pipe	2
7	ST507B	Tips	2

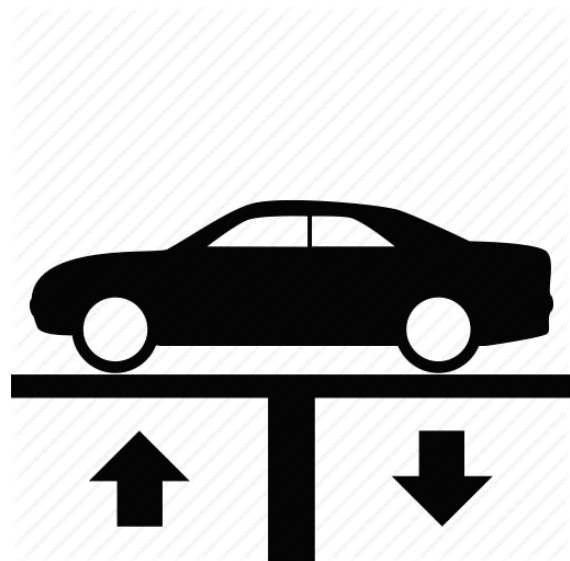
REMOVE STOCK EXHAUST SYSTEM:

2. Raise vehicle up on a hoist or rack to working height. If you don't have access to a hoist or rack, support vehicle with jack stands.

WARNING:
 Avoid serious burns! Allow your vehicle time to cool completely before touching any factory engine components.

To ease preparation and installation of your new kit:

- Apply penetrating lubricant to mounts, bolts and clamps before you remove them.
- Use stands as necessary to support parts as you detach them from your vehicle and again as you install new parts.



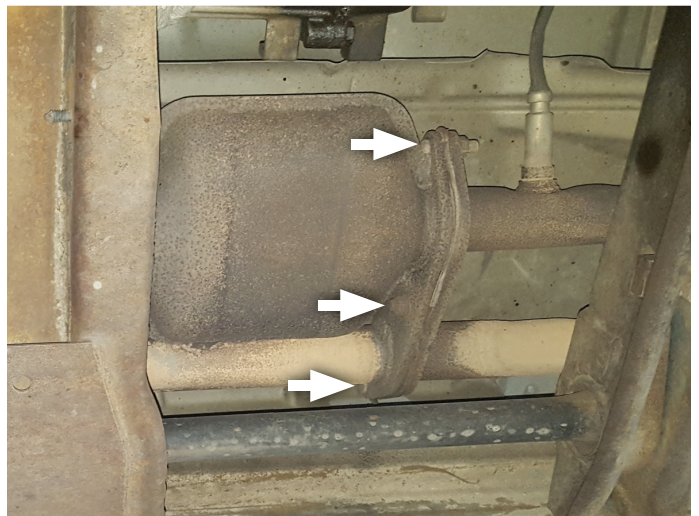
- Cut tailpipe at muffler exit. Disassemble hanger wires from isolators and remove tailpipe section from vehicle.



- Remove O² sensor from front pipe by first unplugging wire at clip connection, then unscrewing sensor from fitting on pipe.



- Support muffler and disassemble remaining wire hanger from isolator. Then remove nuts (x3) at muffler to catalytic flange connection and remove exhaust system. Retain nuts for later use.



INSTALL FLOWMASTER EXHAUST SYSTEM:

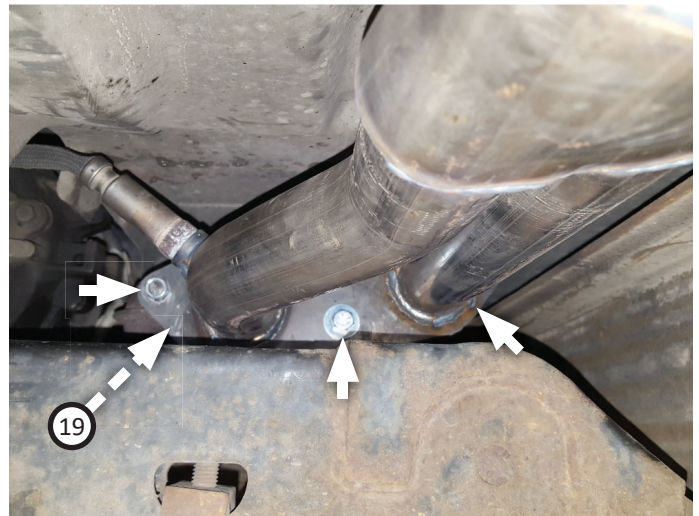
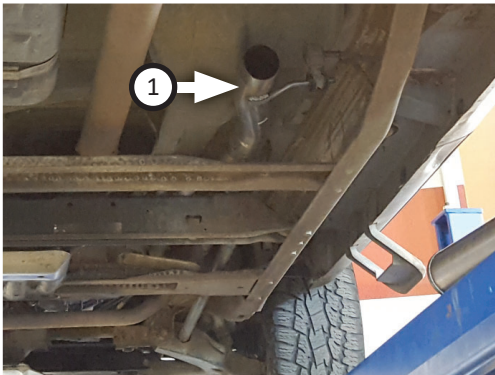
6. Remove nuts from stock and Flowmaster clamps, apply anti-seize compound to bolts and re-install nuts.

NOTE: The image in this step is intended for illustrative purposes only and may or may not accurately reflect components included in your kit.

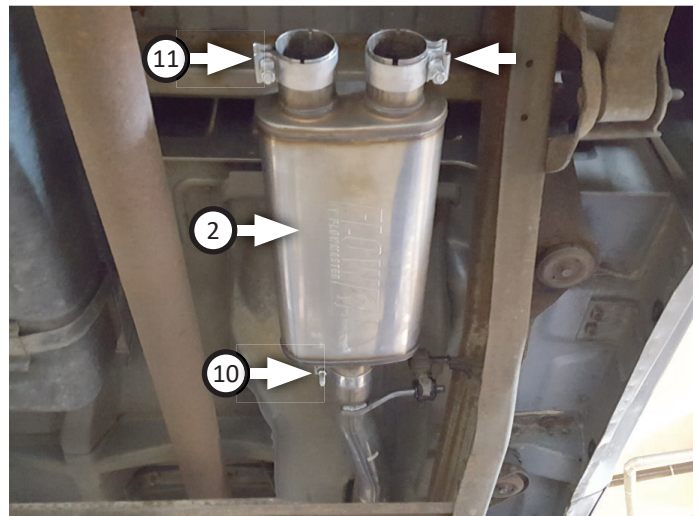
7. Every slip fit connection in this kit must seat 3" deep except for muffler connections which must seat 2" deep. Find all slip fit components in your kit and mark them accordingly so your Flowmaster exhaust system fits properly onto your vehicle.



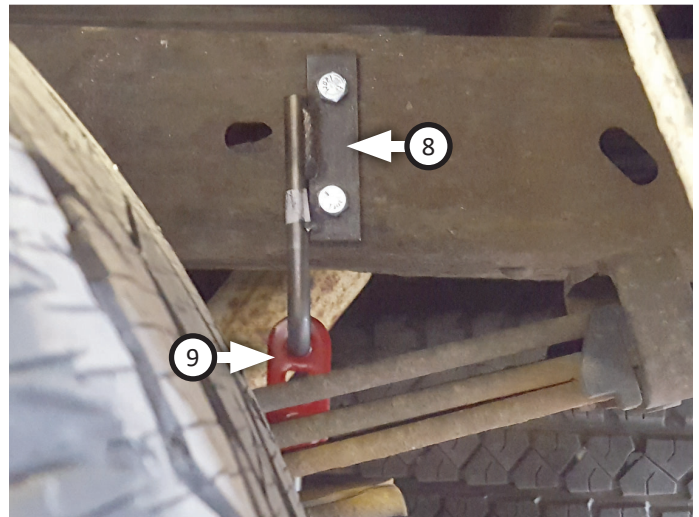
8. Connect **cat pipe assembly (1)** to cat. converters flange using nuts (x3) (removed step 5) with **gasket (19)** fit in between. Insert hanger into isolator. Connect O² sensor to pipe fitting and wire connection.



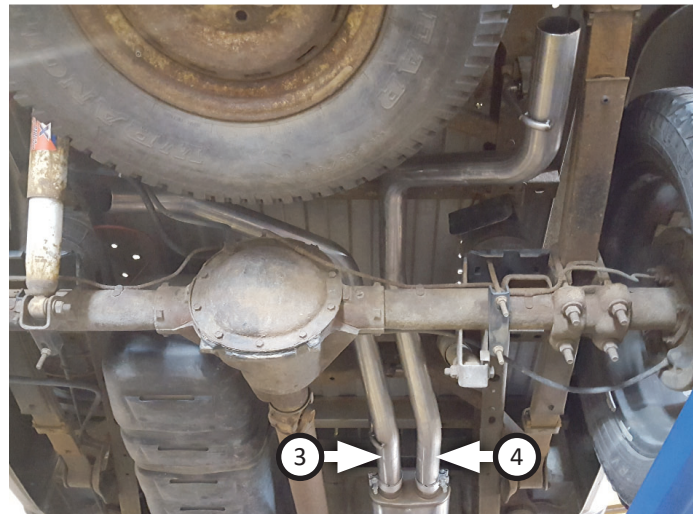
9. Place **clamp (10)** onto **muffler (2)** inlet then connect it to cat pipe assembly. Tighten clamp just enough to allow for adjustment then place **clamps (x2) (11)** onto muffler outlets.



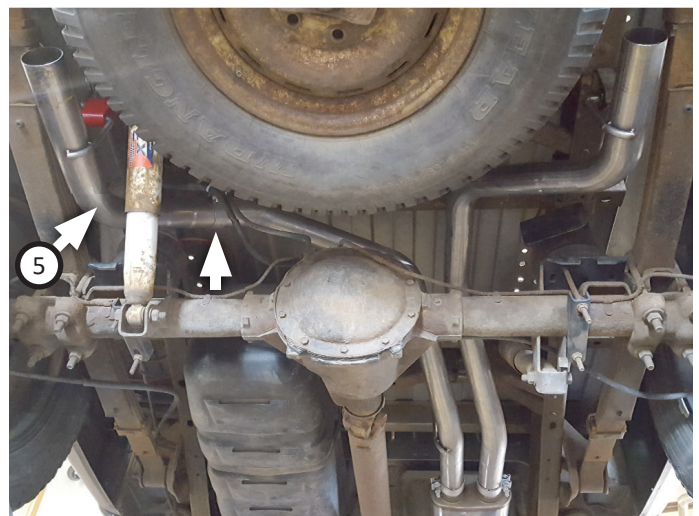
10. Using (x2 ea.) **bolts (12)**, **flat washers (14)**, **lock washers (15)** and **nuts (13)**; mount **tailpipe hanger bracket (8)** to driver side frame rail behind tire. Then install **rubber hanger (9)** onto bracket.



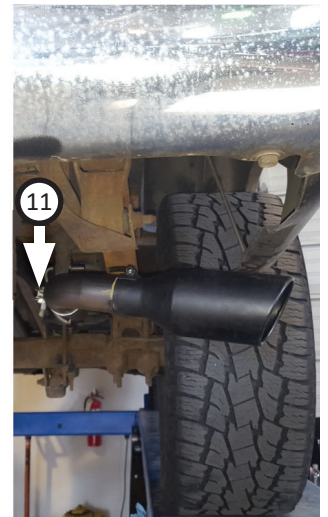
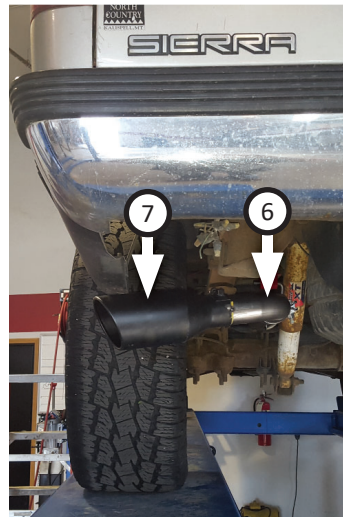
11. Route **left front (3)** and **right tailpipes (4)** over axle then connect them to muffler. Insert their wire hangers into isolators then tighten clamps just enough to allow for adjustment.



12. Place **clamp (11)** onto **left rear tailpipe (5)** then connect it to left front tailpipe. Insert wire hanger into rubber hanger then tighten clamp just enough to allow for later adjustment.



13. Place (x2 ea.) **clamps (11)** onto **side exit pipes (6)** then connect them to tailpipes and tighten clamps just enough to allow for later adjustment.
14. Place **tips (x2) (7)** onto side exit pipes and tighten inlets. Rotate exit pipes and tips to desired distance from body or bumper, so angle cut on tips are properly positioned.



15. Adjust exhaust components for fit; maintaining $\frac{1}{2}$ " clearance and compensating for suspension, travel and vibration. Then fit $\frac{7}{16}$ " (x2) (16) and $\frac{1}{2}$ " (x3) (17) hanger keepers onto each sideways hanger.
16. To prevent rear axle breather tube from contacting the driver side tailpipe, use **zip tie (18)** to fasten rear axle breather tube to brake line bracket on frame. Be sure to allow enough slack in hose for suspension to fully compress and extend.
17. Recommended: Secure slip-fit connections with a 1-inch tack weld then spray high-temp paint over each weld to prevent rust and premature corrosion.



Congratulations, the installation of your FLOWMASTER performance exhaust system is now complete!





Installation Diagram
717923
1996-99 GM SILVERADO/SIERRA 1500
5.7L ENGINE
2/4 WD, 141.5" Wheelbase Only

