



Installation Instructions
717970
2016-23 TOYOTA TACOMA
3.5L ENGINE

OVERVIEW:

1. Take a moment to read and understand these instructions before installing your Flowmaster performance system.

NOTE: Please inventory all parts now before continuing and if necessary, report any missing items to our tech line. This will avoid potentially stranding your vehicle until any missing replacement parts arrive.

ITM #	PART #	DESCRIPTION	QTY.
1	26825M	Inlet Pipe	1
2	70008-565	Muffler Assembly	1
N/A	PK1056	Hardware Package includes:	1
3	524HA	Inlet Pipe Hanger	1

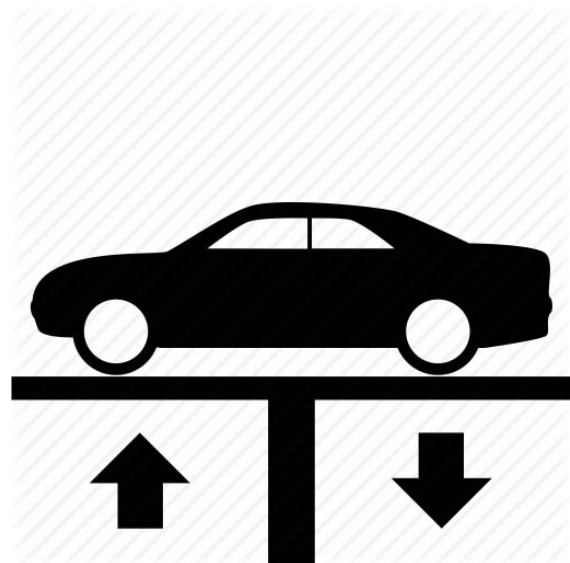
REMOVE STOCK EXHAUST SYSTEM:

2. Raise vehicle up on a hoist or rack to working height. If you don't have access to a hoist or rack, support vehicle with jack stands.

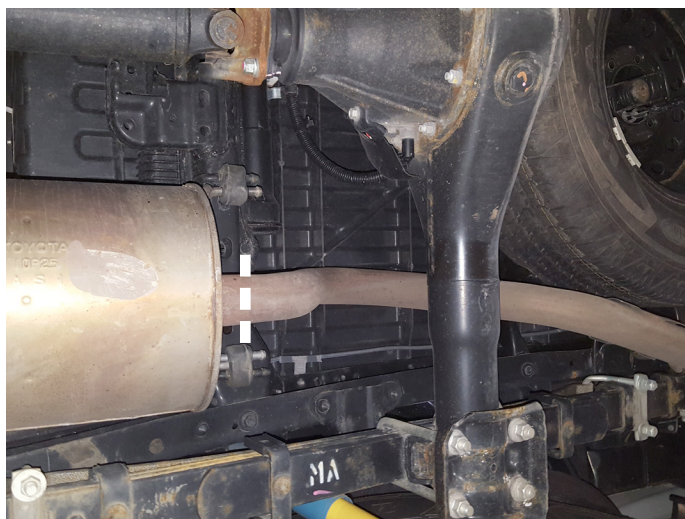
WARNING: Avoid serious burns! Allow your vehicle time to cool completely before touching any factory engine components.

To ease preparation and installation of your new kit:

- Apply penetrating lubricant to mounts, bolts and clamps before you remove them.
- Use stands as necessary to support parts as you detach them from your vehicle and again as you install new parts.



- Cut tailpipe at muffler exit. Disassemble hanger wire from isolator and remove tailpipe section from vehicle.



- Support muffler and disassemble wire hangers from isolators. Remove and retain (x2) bolts from flange then disconnect and remove muffler section from vehicle.



INSTALL FLOWMASTER EXHAUST SYSTEM:

- Remove nuts from stock and Flowmaster clamps, apply anti-seize compound to bolts and re-install nuts.

NOTE: The image in this step is intended for illustrative purposes only and may or may not accurately reflect components included in your kit.

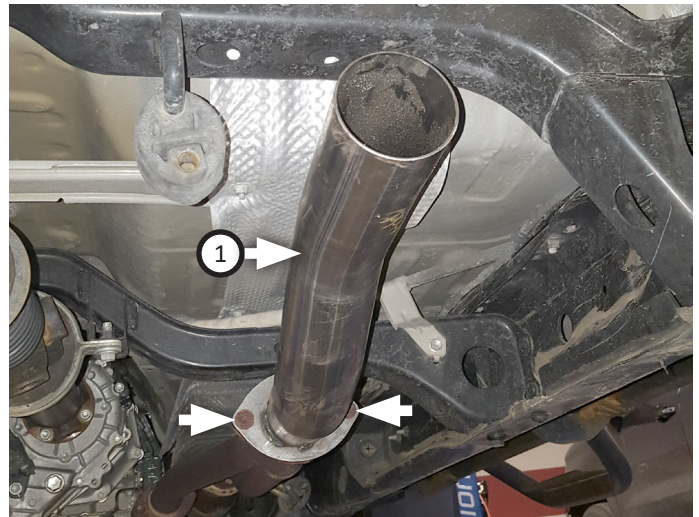
- The muffler connection must seat 2" deep. Find and mark it accordingly so your Flowmaster exhaust system will install properly onto your vehicle.



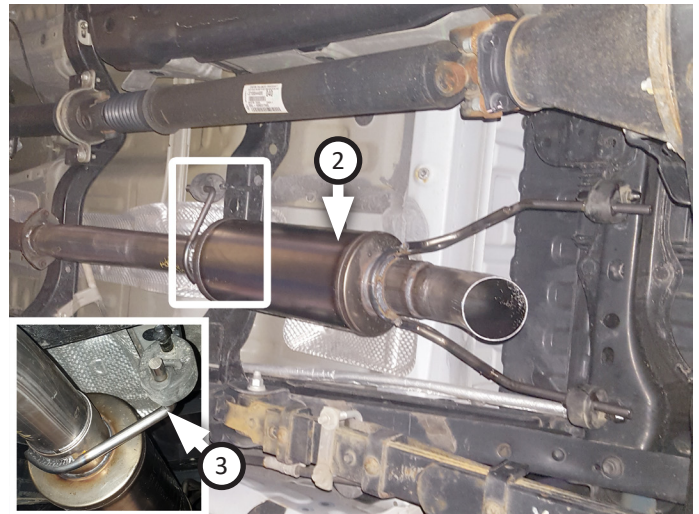
NOTE: For applicable models, apply modification below according to wheel base.

WHEEL BASE	MODIFICATION
128"	Trim 13" from inlet pipe
141"	None

7. Connect **inlet pipe (1)** to exhaust oriented as shown and fasten flange with (x2) bolts (removed step 4).



8. Place **inlet pipe hanger (3)** onto **muffler (2)** then connect assembly to inlet pipe. Insert wire hangers into isolators then tighten clamp just enough to allow for adjustment.
9. Adjust exhaust components for fit; maintaining $\frac{1}{2}$ " clearance and compensating for suspension, travel and vibration then tighten clamp fully.
10. Recommended: Secure slip-fit connections with a 1-inch tack weld then spray high-temp paint over each weld to prevent rust and premature corrosion.



Congratulations, the installation of your FLOWMASTER performance exhaust system is now complete!





Installation Diagram
717970
2016-23 TOYOTA TACOMA
3.5L ENGINE

