



Installation Instructions

717997

2019-2023 Ford Ranger
With 2.3L EcoBoost Engine
2 or 4-Wheel Drive

Installation requires moderate mechanical skill. If this job is beyond your abilities, seek the services of a qualified technician.

If you do not understand any part of these instructions, please call Flowmaster Technical Support at (866) 464-6553 for assistance.

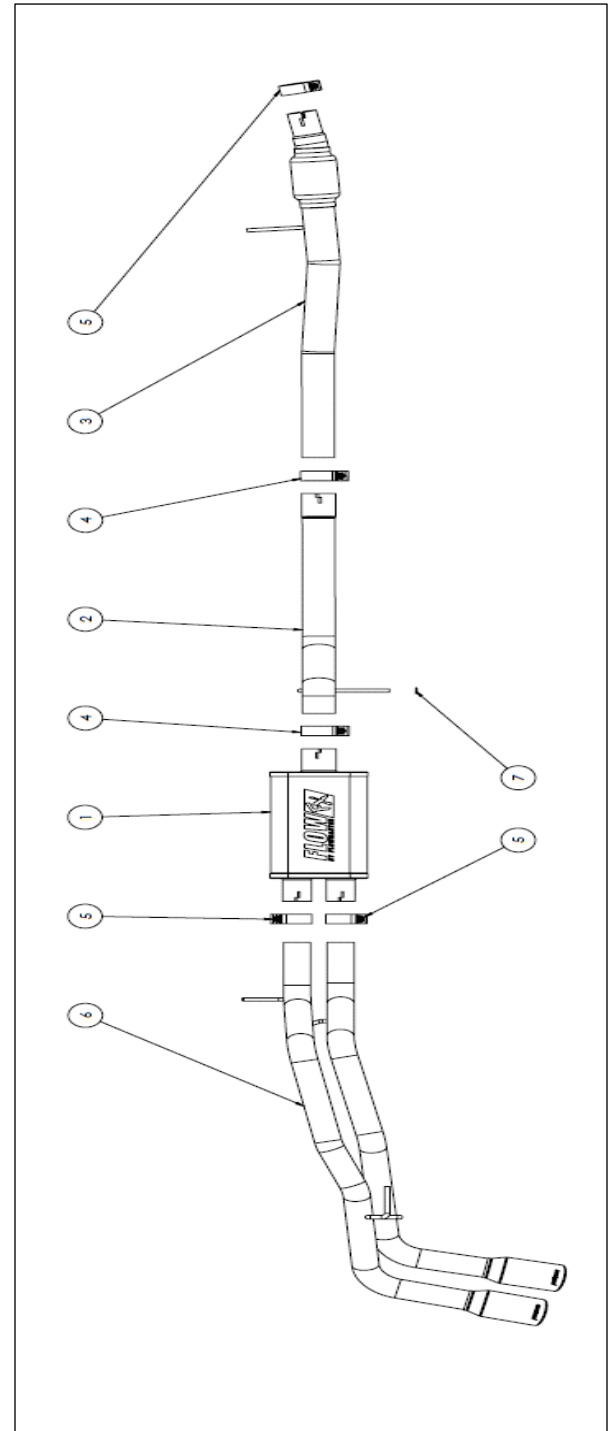
Apply penetrating oil generously to clamps, fasteners, pipes, and hanger rods for ease of disassembly.

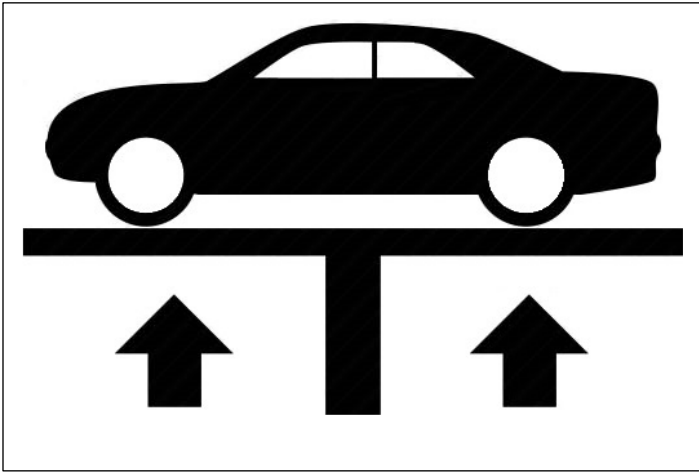
REVIEW THE INSTRUCTIONS & VERIFY THE KIT CONTENTS

Take a moment to read and understand these instructions before installing your Flowmaster exhaust kit.

ITEM#	Part #	Description	Qty.
1	72198-Z	Muffler	1
2	26917M	Inlet Pipe Ext.	1
3	26783M	Inlet Pipe	1
4	MC300BS	3" Band Clamp	2
5	MC250BS	2.5" Band Clamp	3
6	86752M	Rear Pipe Assembly	1
7	HW502	Push Nut 7/16	1

Use the parts drawing and list to verify your kit's contents. In the unlikely event that any parts are missing, please contact Flowmaster Technical Support for replacements.





Vehicle Compatibility

Model Year: 2019-2023
Make: Ford Ranger
Engine: 2.3L EcoBoost
Super Crew Cab 5 ft. Bed
Super Cab 6 ft. Bed

BEFORE STARTING:

Your vehicle must be raised a minimum of 18 inches. A floor hoist is ideal. If no hoist is available, we strongly urge the use of axle stands as a safety measure. **Please read and understand these instructions and disclaimer in their entirety before attempting installation.**

CAUTION! WORK ONLY ON A SOLID, LEVEL SURFACE. USE JACKS /JACK STANDS OF SUFFICIENT CAPACITY TO LIFT AND SUPPORT YOUR VEHICLE. NEVER WORK UNDER A VEHICLE SUPPORTED BY A FLOOR OR BUMPER JACK.

Removing the OEM Exhaust.

NOTE: Cutting the factory tailpipe just after the muffler will simplify the removal of the factory exhaust. If you elect to cut the tailpipe after the muffler, you may skip **Step. 2** and remove the muffler and front pipe as one piece.

1. Apply penetrating oil to the (x2) 15mm nuts at the mid-pipe clamp, muffler clamp, and each rubber hanger on the exhaust.
***Cutting the tailpipe after the muffler and removing it from the vehicle should be done at this point. if that option is being used.**
2. Loosen the band clamp at the muffler inlet and spray the slip joint liberally with penetrating oil.
3. Support the muffler and inlet pipe assembly.
4. Remove the tailpipe hanger isolator from the frame rail just after the rear axle (**H3**).
5. Remove the rubber hanger isolator at the hanger assembly before the muffler (**H1**) and at the rear of the muffler (**H2**).
6. Remove the muffler and tailpipe assembly.

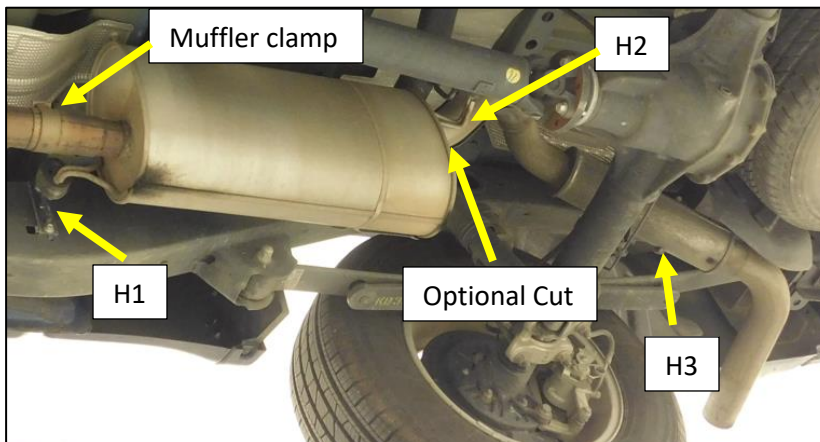


Figure 1

7. Loosen the 15mm nut on the clamp on the mid-pipe at the catalytic converter outlet. **Fig. 2**
8. Spray the slip joint liberally with penetrating oil.
9. Remove the 13mm bolt at the mid-pipe hanger isolator assembly on the crossmember. **Fig.3**
10. Remove the mid-pipe from the vehicle.

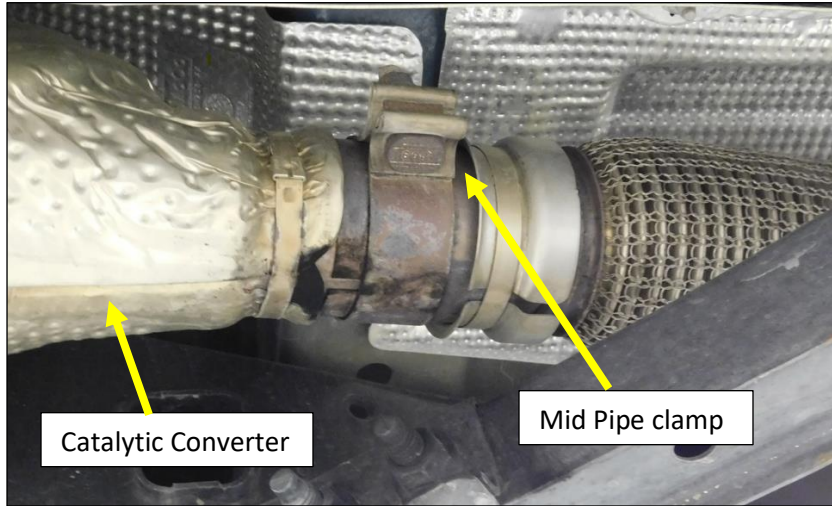


Figure 2

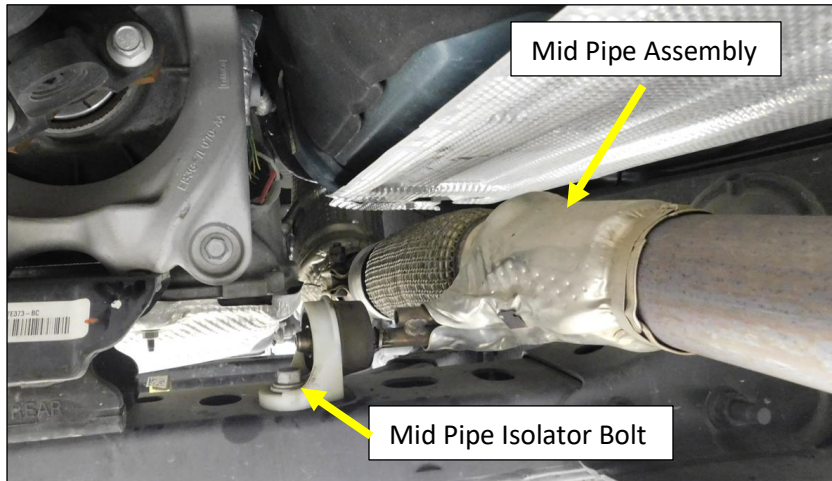


Figure 3

INSTALL YOUR FLOWMASTER EXHAUST SYSTEM



Before installing clamps in the following steps, remove their nuts, apply anti-seize compound to the bolt threads, and re-install the nuts.

1. Install a supplied 2.5" band clamp **(5)** on to the expanded end of the inlet pipe with the flex. Position the clamp with the bolt on top of the pipe and the nut facing towards the transmission at the 10 o'clock position. **Fig.4**
Important: Be sure the clamp is fully installed on to the pipe and completely covering the narrow notch in the pipe to prevent exhaust leaks. The larger notch at the opening of the pipe will remain uncovered and allow the alignment pin to index the pipe to the catalytic converter.
2. Install the inlet pipe **(3)** onto the catalytic converter and align the indexing slot to the pin on the pipe. **Fig.4**

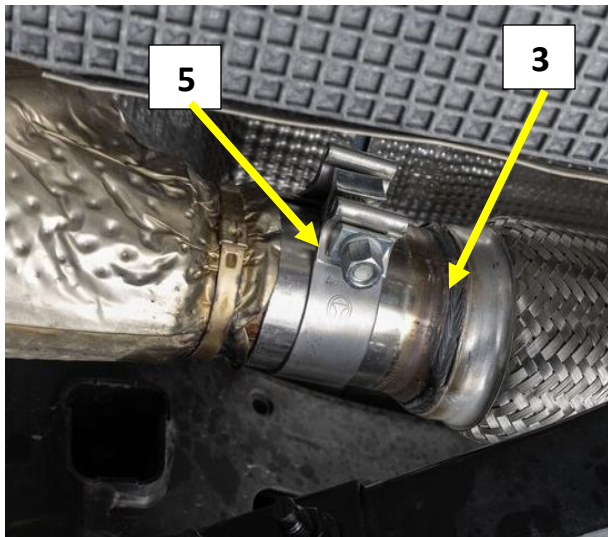


Figure 4



Figure 5

3. Install the hanger Isolator on to the Inlet pipe hanger rod and install the 13mm bolt. **Fig.5**

4. Install a 3.0" band clamp (4) onto the expanded end of the inlet extension pipe (2).
5. Install the extension pipe (2) on to the Inlet pipe (3) and insert the hanger rod into the rubber isolator (H1) on the frame. Tighten the clamp to hold the pipe, but allow for adjustment.
6. Install a 3.0" band clamp (4) onto the 3" single inlet of the muffler (1).
7. Install the muffler (1) 2" on to the extension pipe (2) with the seam to the inside. Tighten the clamp to hold the muffler, but allow for adjustment.
8. Install a 2.5" band clamp (5) on each of the muffler outlet pipes.
9. Install the rear pipe assembly over the axle and align the pipes with the muffler.
10. Insert the pipes into the muffler 2".
11. Install the tailpipe hanger isolator on to the tailpipe hanger rod (H3) and install to the frame.
12. Install the rubber hanger isolator on to tailpipe hanger rod (H2) at the rear of the muffler.
13. Install the supplied 7/16 push nut on to hanger rod (H1).

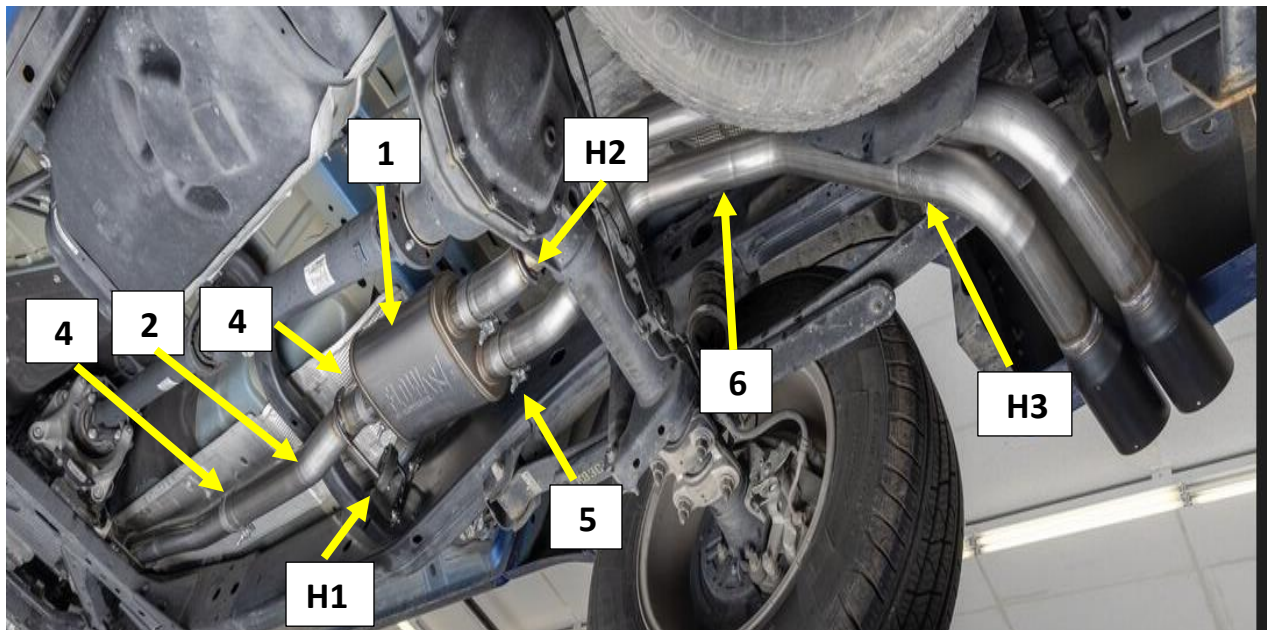


Figure 6

14. Start at the front of the system and work to the rear of the vehicle and adjust all components for best alignment and tighten the band clamps and hardware.

Enjoy your Flowmaster Exhaust!