



### Installation Instructions

# 817477

2009-22\* RAM 1500

5.7L HEMI ENGINE

2009-13 DODGE/RAM 1500

4.7L ENGINE

2/4 Wheel Drive & All Wheelbases

With Factory Dual Tailpipes

\*2019-22 Classic Body Only

### OVERVIEW:

1. Take a moment to read and understand these instructions before installing your Flowmaster performance system.

**NOTE:** Please inventory all parts now before continuing and if necessary, report any missing items to our tech line. This will avoid potentially stranding your vehicle until any missing replacement parts arrive.

ITM #	PART #	DESCRIPTION	QTY.
1	TB467S	Adapter Pipe	1
2	8530572-Z	AMT Muffler	1
3	16629S	Right Tailpipe	1
4	16392S	Left Front Tailpipe	1
5	16393S	Left Rear Tailpipe	1
6	16632S	Rear Exit Pipe (R/L)	2
7	ST339	Stainless Tip	2
N/A	PK500	Hardware Package includes:	1
8	MC250BS	2½" Stainless Band Clamp	5
9	MC300BS	3" Stainless Band Clamp	2

### REMOVE STOCK EXHAUST SYSTEM:

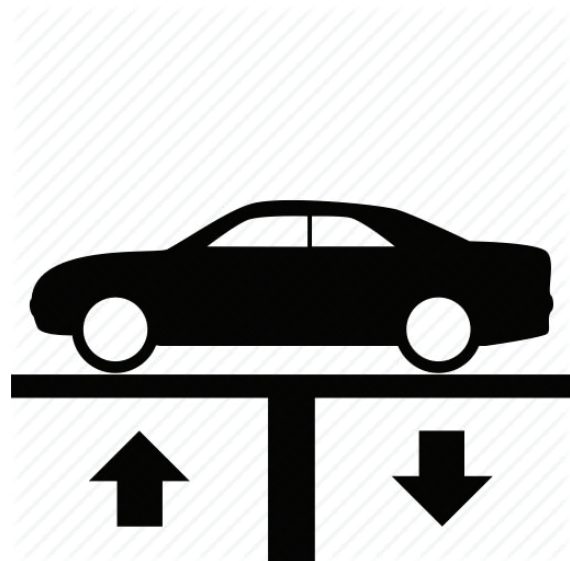
2. Raise vehicle up on a hoist or rack to working height. If you don't have access to a hoist or rack, support vehicle with jack stands.

**WARNING:**

Avoid serious burns! Allow your vehicle time to cool completely before touching any factory engine components.

**To ease preparation and installation of your new kit:**

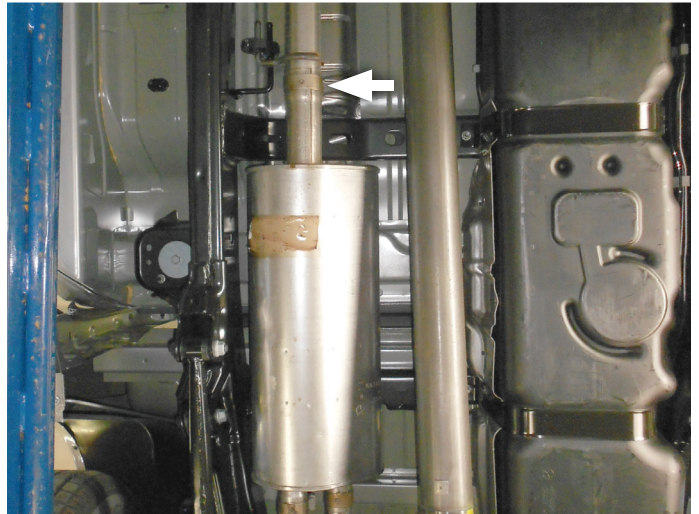
- Apply penetrating lubricant to mounts, bolts and clamps before you remove them.
- Use stands as necessary to support parts as you detach them from your vehicle and again as you install new parts.



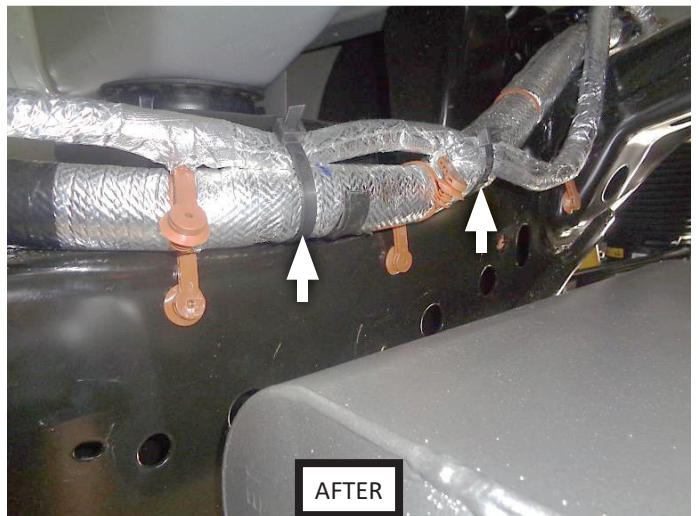
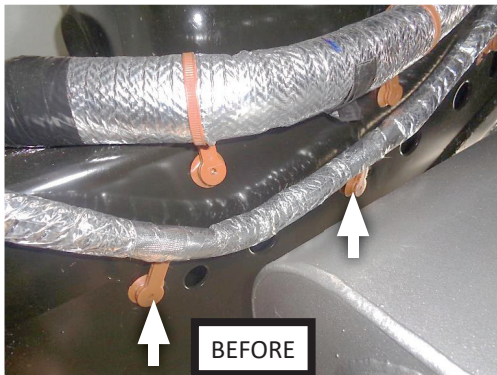
3. Cut tailpipes (x2) at muffler exit. Disassemble wire hangers from isolators and remove tailpipes from vehicle.



4. Support muffler with a stand, remove muffler wire hangers from isolators then loosen ring clamp at muffler inlet connection. Slide muffler off of front pipe and set aside.



5. If your vehicle has electrical wiring routed along inside face of right frame; carefully release harness from frame by unclipping it. Then use cable ties to secure it to top of frame (or to harness already on top of frame, as shown).



## INSTALL FLOWMASTER EXHAUST SYSTEM

6. Remove nuts from stock and Flowmaster clamps, apply anti-seize compound to bolts and re-install nuts.

**NOTE:** The image in this step is intended for illustrative purposes only and may or may not accurately reflect components included in your kit.

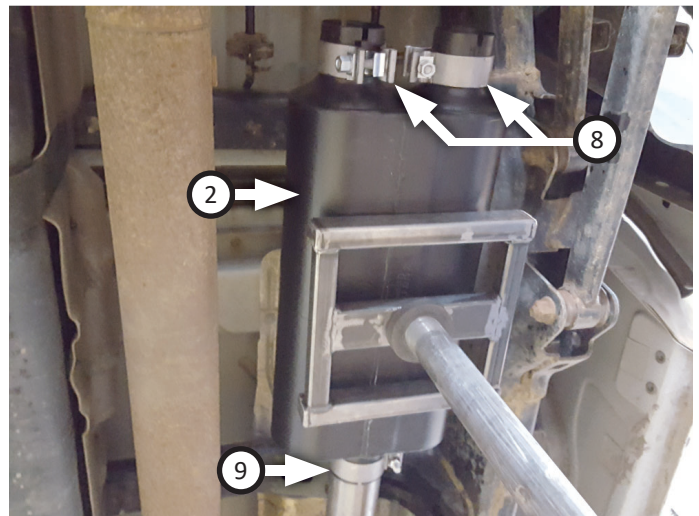
7. Every slip fit connection in this kit must seat 3" deep except for muffler connections which must seat 2" deep. Mark all slip fit components in your kit and mark them accordingly so your Flowmaster exhaust system fits properly onto your vehicle.



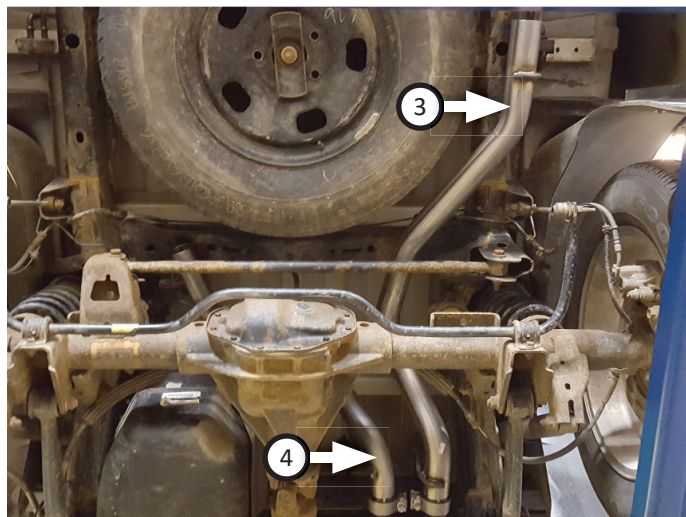
8. Place **clamp (9)** onto **adapter pipe (1)** then connect it to factory inlet pipe. Line up notch to tab on factory pipe then tighten clamp just enough to allow for adjustment.



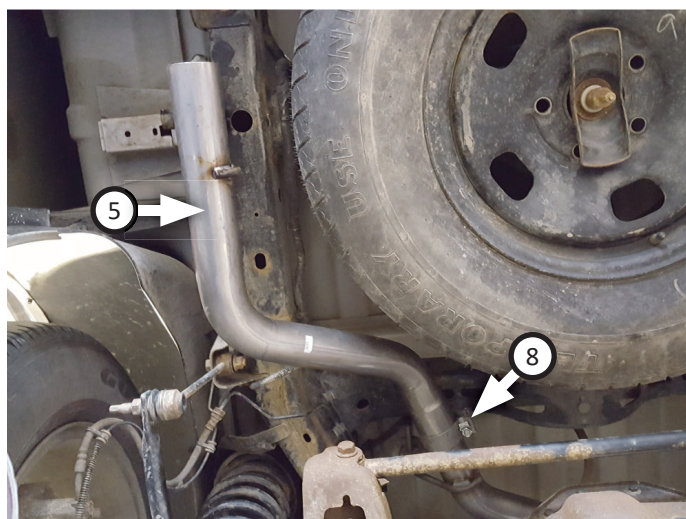
9. Place **clamp (9)** onto **AMT muffler (2)** then connect it to adapter pipe. Tighten clamp enough to allow for adjustment then place **clamps (x2) (8)** onto muffler outlets.



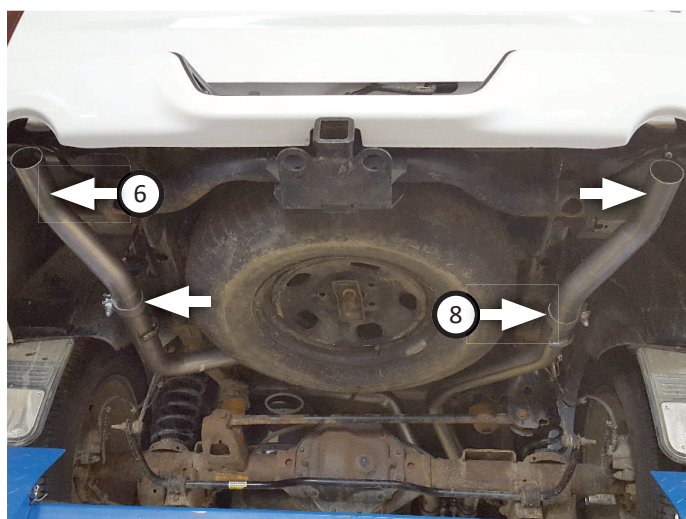
- 
10. Route **right (3)** and **left front tailpipes (4)** over axle and connect them to muffler. Hang wire hangers into isolators and tighten clamps (x2) just enough to allow for later adjustment.



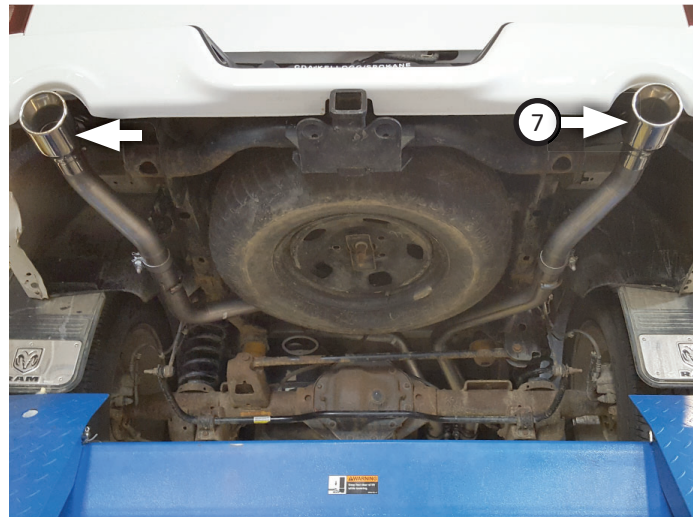
- 
11. Place **clamp (8)** onto **left rear tailpipe (5)** and connect it to left front tailpipe. Set wire hanger at rear of tailpipe into isolator as shown, then tighten clamp just enough to allow for adjustment.



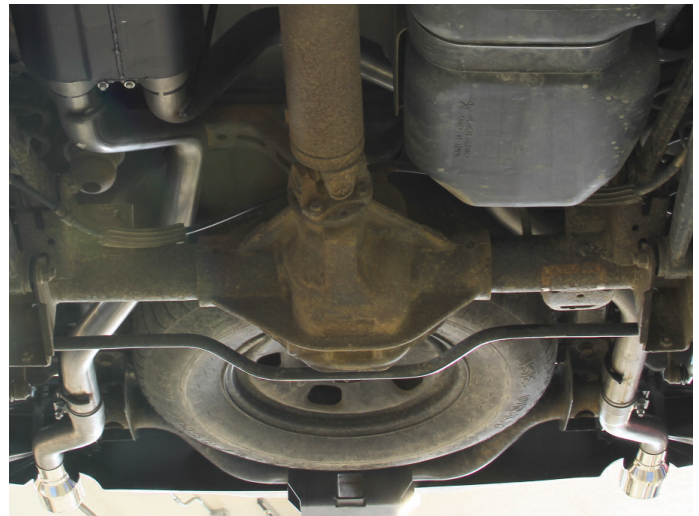
- 
12. Place **clamps (x2) (8)** onto **rear exit pipes (6)** then connect them to tailpipes. Tighten clamps enough to allow for adjustment.



13. Place **stainless tips (7)** onto both exit pipes and adjust to desired position. Tighten pinch clamps enough to hold in place.



14. Adjust exhaust components to provide a satisfactory fit. Maintain a minimum of ½" clearance around all components of exhaust system, keeping in mind suspension, travel and vibration. After making any required adjustments, securely tighten all clamps.
15. Recommended: Secure slip-fit connections with a 1-inch tack weld then spray high-temp paint over each weld to prevent rust and premature corrosion.



Congratulations, the installation of your FLOWMASTER performance exhaust system is now complete!





Installation Diagram  
**817477**  
2009-22\* RAM 1500  
5.7L HEMI ENGINE  
2009-13 DODGE/RAM 1500  
4.7L ENGINE  
2/4 Wheel Drive & All Wheelbases  
With Factory Dual Tailpipes  
\*2019-22 Classic Body Only

