



## Installation Instructions

# 817709

### 2014-24 RAM 2500

### 6.4L HEMI ENGINE

**Crew Cab/Long Bed & Mega Models only**

Does not fit with factory air-bags

### OVERVIEW:

1. Take a moment to read and understand these instructions before installing your Flowmaster performance system.

**NOTE:** Please inventory all parts before starting the installation process and call our tech line to report any missing parts. This will help avoid potentially stranding your vehicle until any missing replacement parts arrive.

ITM #	PART #	DESCRIPTION	QTY.
9	26469S	Rear Exit Pipe (R/L)	2
10	ST462	Stainless Tip	2
N/A	PK777	Hardware Pack includes:	1
11	474HA	Frame Hanger	1
12	475HA	Back Up Plate w/ bolt	1
13	HA168	Rubber Hanger	1
14	MC350BS	3½" Stainless Band Clamp	3
15	MC300BS	3" Stainless Band Clamp	5
16	HW103	¾" Nut	1
17	HW303	¾" Flat Washer	1
18	HW309	¾" Lock Washer	1
19	HW502	7/16" Hanger Keepers	1
20	HW503	½" Hanger Keepers	1
21	HW505	15" Zip Tie	2

ITM #	PART #	DESCRIPTION	QTY.
1	36061S	Inlet Pipe	1
2	36062S	149.5" Extension	1
3	36063S	169.5"/160.5" Extension	1
4	8535582-Z	Muffler	1
5	26465S	Right Tailpipe	1
6	26466S	Left Front Tailpipe	1
7	26467S	Left Rear Tailpipe	1
8	26468S	Side Exit Pipe (R/L)	2

### REMOVE STOCK EXHAUST SYSTEM:

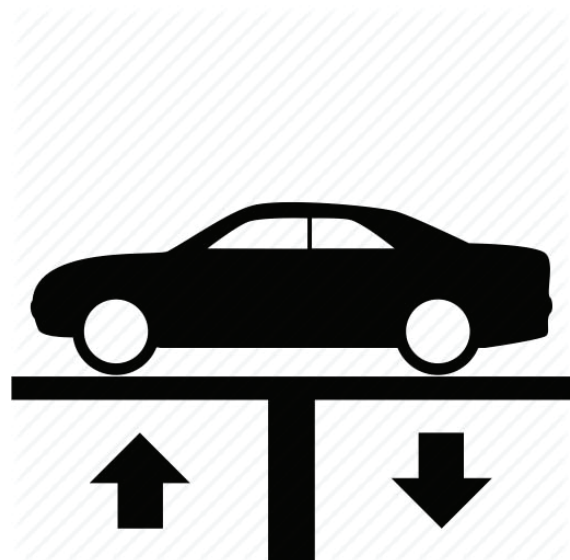
2. Raise vehicle up on a hoist or rack to working height. If you don't have access to a hoist or rack, support vehicle with jack stands.

**WARNING:**

Avoid serious burns! Allow your vehicle time to cool completely before touching any factory engine components.

**To ease preparation and installation of your new kit:**

- Apply penetrating lubricant to mounts, bolts and clamps before you remove them.
- Use stands as necessary to support parts as you detach them from your vehicle and again as you install new parts.



**NOTE:** Remove retainer clips from the end of each hanger to allow disassembly.

3. Cut tailpipe at muffler exit, remove hanger from mount at rear of tailpipe and remove it from vehicle.



4. Support muffler and remove all hangers from isolators on muffler assembly; then remove clamp on slip connection just behind catalytic converter. Heat or cut to separate connection and remove muffler assembly.



## INSTALL FLOWMASTER EXHAUST SYSTEM

5. Remove nuts from stock and Flowmaster clamps, apply anti-seize compound to bolts and re-install nuts.

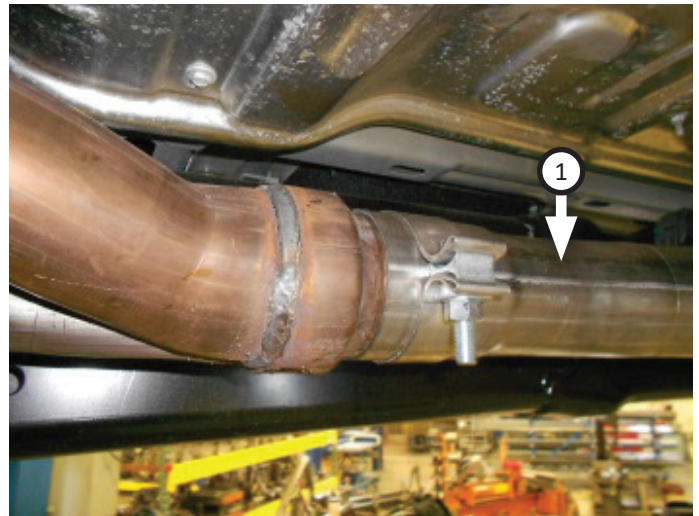
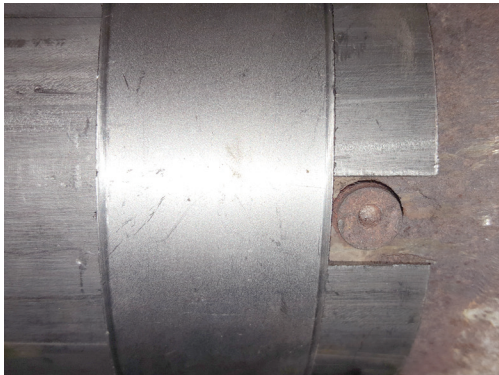
**NOTE:** The image in this step is intended for illustrative purposes only and may or may not accurately reflect components included in your kit.



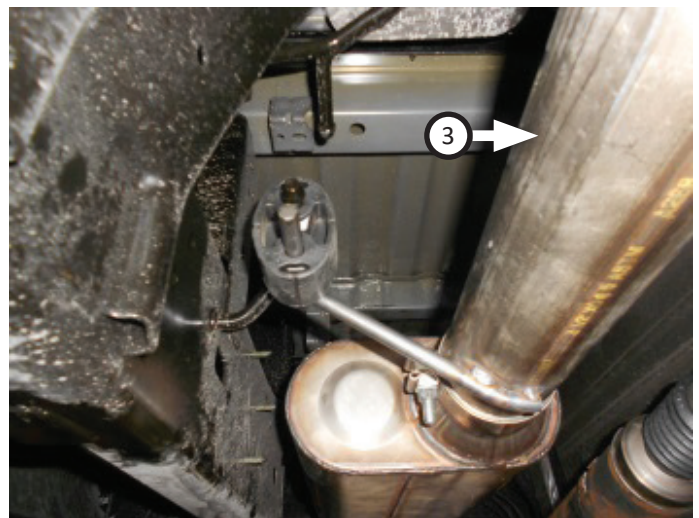
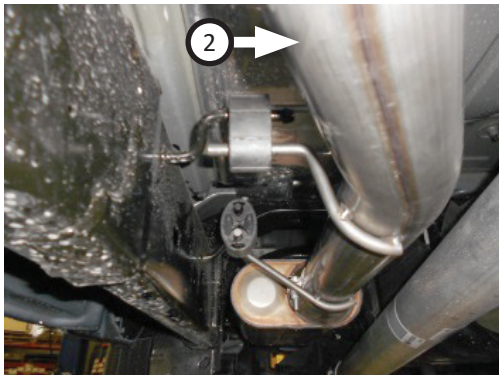
- Check which specifications your vehicle falls under, then prepare your kit according to the corresponding modifications and assembly combinations to ensure a proper install.

WHEEL BASE	BODY STYLE	BED LENGTH	INLET ASSY:	MODIFICATION
149.5"	Crew Cab	6'4"	Inlet+Extension (36062S)	None
160"	Mega Cab	6'4"	Inlet+Extension (36063S)	Trim 9" from back of extension pipe (36063S)
168.9"	Crew Cab	8'	Inlet+Extension (36063S)	None

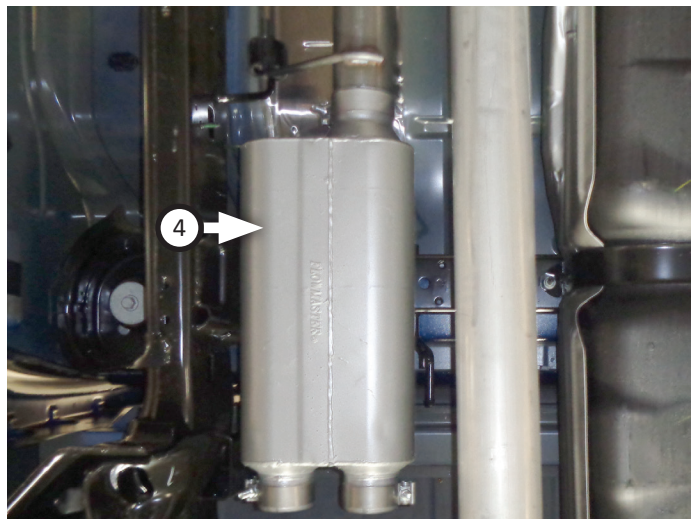
- Place **clamp (14)** onto **inlet pipe (1)** then connect it to factory front pipe, lining inlet pipe notch with front pipe tab. Insert wire hangers into isolators then tighten clamp enough to allow for adjustment without covering tab.



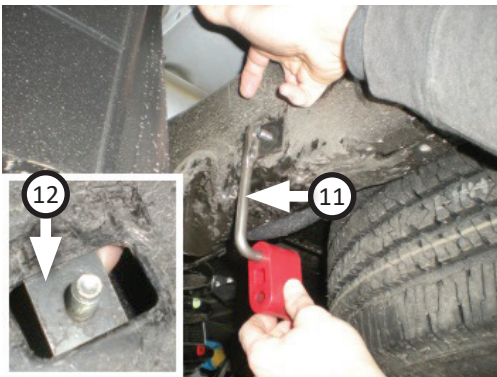
- Place **clamp (14)** onto **extension pipe (2 or 3)** then connect it to inlet pipe. Connect wire hangers to isolators then tighten clamp just enough to allow for adjustment.



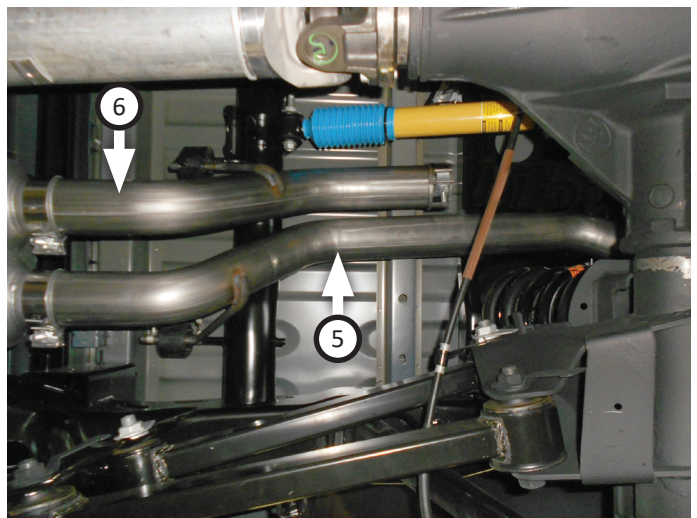
9. Place **clamp (14)** onto **muffler (4)** inlet then connect it to extension pipe. Tighten clamp just enough to allow for adjustment then place **clamps (x2) (15)** onto muffler outlets.



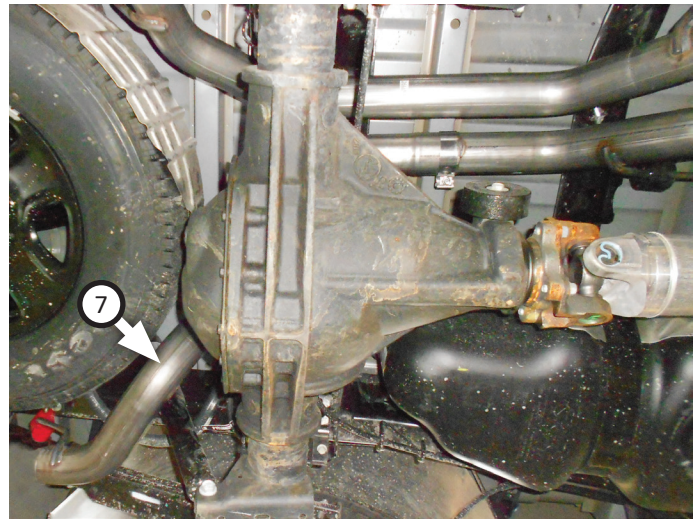
10. On vehicle frame near spare tire, on drivers side, connect **frame hanger (11)** to **plate assembly (12)** and secure them with **flat washer (17)**, **lock washer (18)** and **nut (16)**. Place **rubber hanger (13)** on end.



11. Route **right (5)** and **left front (6)** tailpipes over axle then connect them to muffler while inserting wire hangers into mounts and tighten clamps just enough to allow for adjustment.

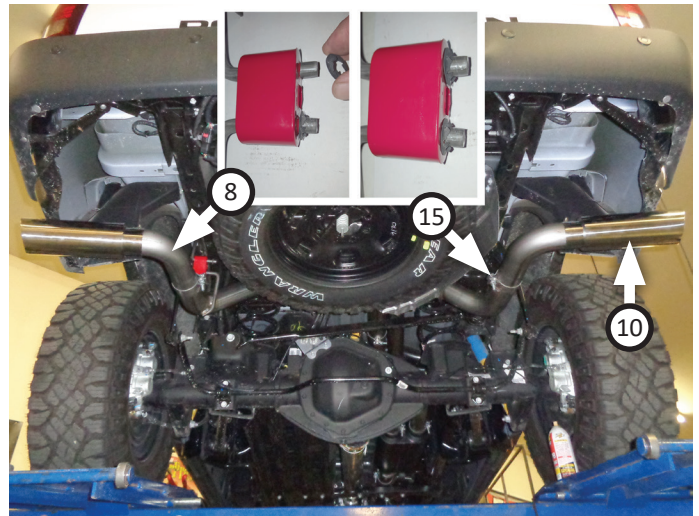


- Place **clamp (15)** on **left rear tailpipe (7)** then connect it to left front tailpipe at slip-fit connection over rear axle. Place rear hanger into rubber hanger then tighten clamp just enough to allow for adjustment.



**NOTE:** This kit includes both side and rear exit pipes. If you prefer, use **rear exit pipes (9)** in place of side exit pipes in step 13.

- Place (x2 ea.) **clamps (15)** onto **side exit pipes (8)** then connect them to tailpipes. Tighten clamps enough to allow for adjustment.
- Place (x2) **tips (10)** onto exit pipes and tighten inlets. Rotate them so angle cut on tips are in desired position.
- Adjust exhaust components for fit; maintaining 1/2" clearance and compensating for suspension, travel and vibration. Secure vent hose and brake lines away from heat with **zip ties (21)** then tighten all clamps.
- Secure exhaust system by fitting **hanger keepers (19, 20)** onto each wire hanger that runs perpendicular to your vehicles axle.



- Recommended: apply one inch tack weld to all slip-fit connections then apply high temperature paint over each weld to prevent rust and premature corrosion.

Congratulations, the installation of your FLOWMASTER performance exhaust system is now complete!





Installation Diagram  
**817709**  
**2014-24 RAM 2500**  
**6.4L HEMI ENGINE**  
Crew Cab/Long Bed & Mega Models only  
Does not fit with factory air-bags

